

IP Camera Firmware Version: V5.7.40 Release Note

Firmware Basic Information	Firmware Version: IPCH_H8_EN_STD_5.7.40_220804
---------------------------------------	--

1. New Features

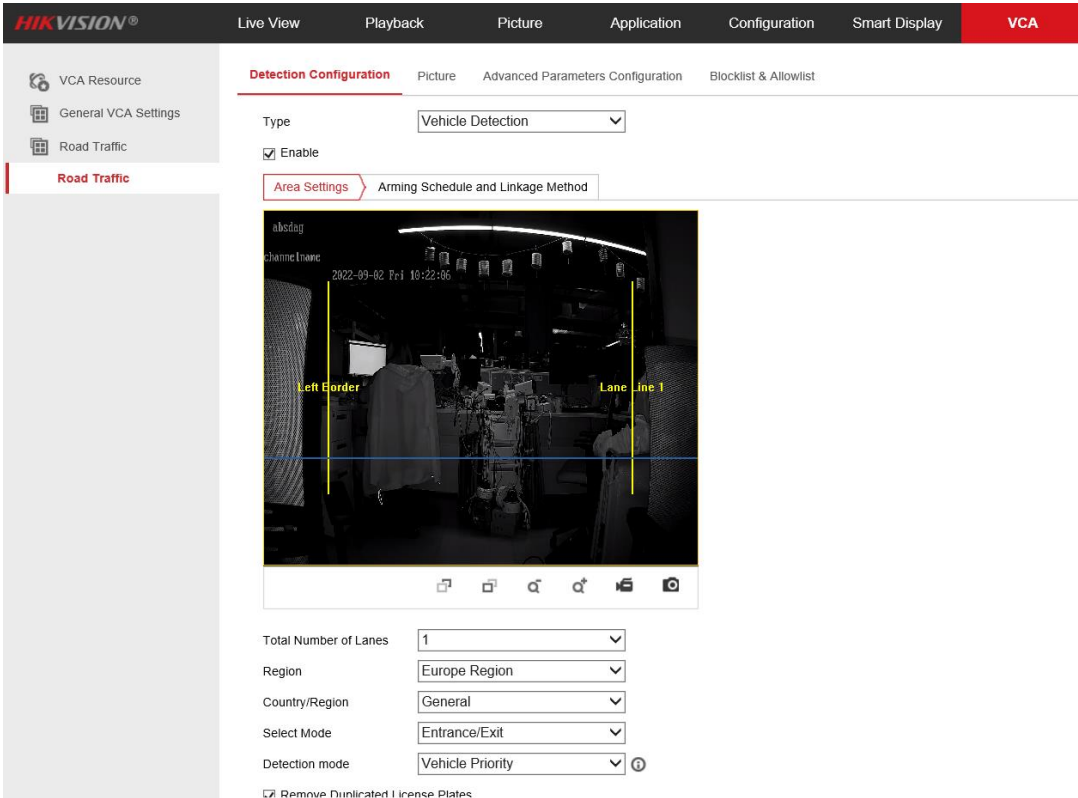
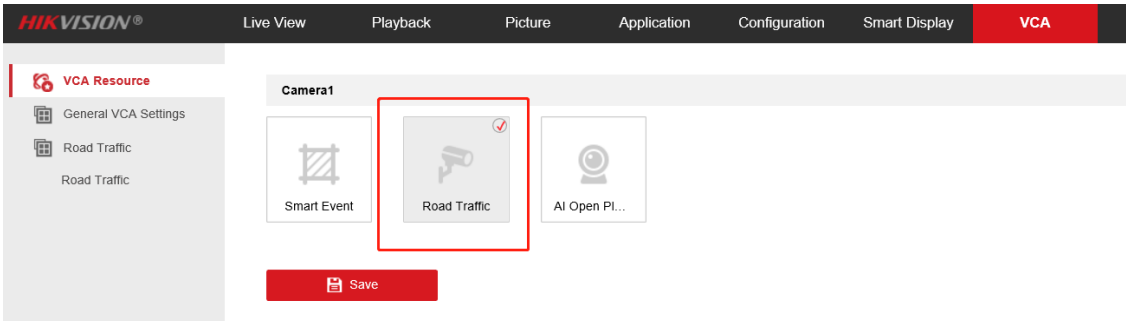
- Support Vibration Detection function

The screenshot shows the 'Configuration' menu with 'Vibration Detection' selected. The interface includes a sidebar with navigation options like Local, System, Network, Video/Audio, Image, Event, Basic Event, Smart Event, and Storage. The main area has tabs for Motion Detection, Video Tampering, Alarm Input, Alarm Output, Exception, Audible Alarm Output, Video Quality Diagnosis, and Vibration Detection. Under 'Vibration Detection', there is an 'Enable' checkbox, a 'Sensitivity' slider set to 50, and tabs for 'Arming Schedule' and 'Linkage Method'. The 'Arming Schedule' tab shows a 7-day calendar grid with blue bars indicating arming times. A 'Save' button is at the bottom.

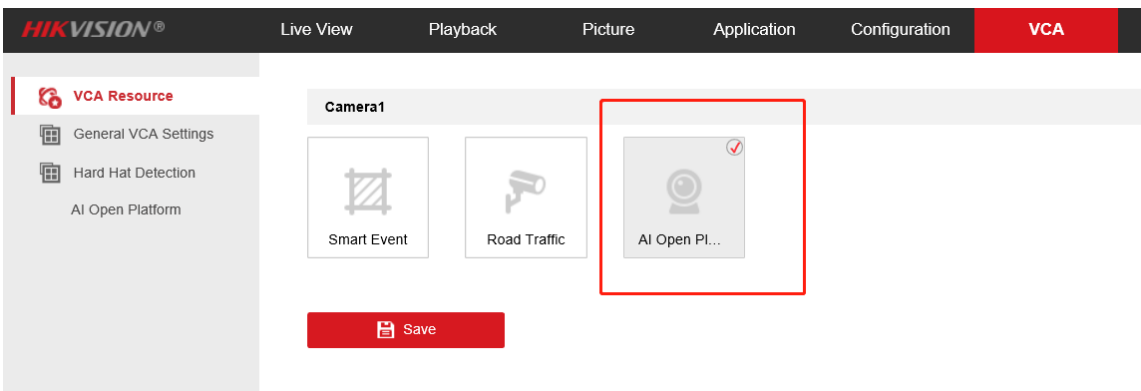
- Support Tilt Angle detection function

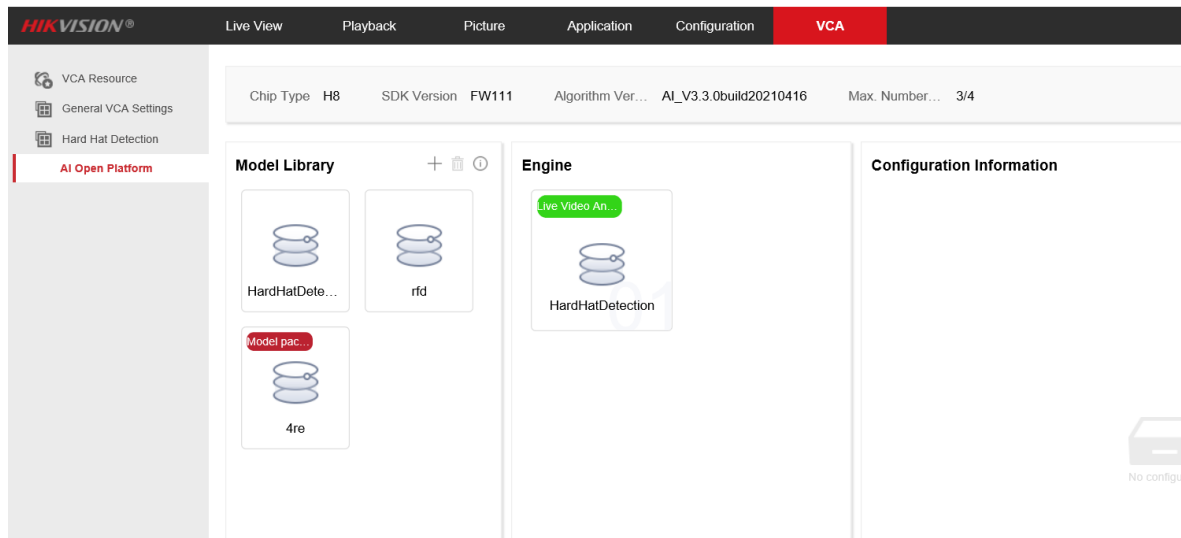
The screenshot shows the 'OSD Settings' configuration page. The sidebar is similar to the previous screenshot. The main area has tabs for Display Settings, OSD Settings, Privacy Mask, Picture Overlay, and Image Parameters Switch. Under 'OSD Settings', there is a 'Character Set' dropdown set to 'GBK', a video preview window showing a camera view with OSD text, and a list of checkboxes for 'Display Name', 'Display Date', 'Display Week', and 'Display Tilt Angle'. The 'Display Tilt Angle' checkbox is highlighted with a red box. Below these are fields for 'Camera Name', 'Time Format', and 'Date Format'. A 'Text OverLay' section contains eight checkboxes and input fields. A 'Save' button is at the bottom.

- Support ANPR function(/P model), support blacklist&Allowlist, Wiegand



- Support Hard Hat Detection function





2. Improved Features

- N/A

Customer Impact and Recommended Action

This update refers to function/compatibility improvement and will take effect automatically after the Date of Change. We are very sorry for any inconvenience of use-habit changes caused by this action. For any questions and request for this firmware, please contact our local technical support team.

Remarks:

- Hikvision reserves the right to change, alter or withdraw the above notification without prior notice.
- Product design and specifications are subject to change without prior notice.
- The Hikvision firmware may contain errors known as errata which may cause the product to deviate from published specifications. Current characterized errata are available on request.
- Hikvision is not liable for any typing or printing errors.

Supported Product List	
Product Category	Model Number
IP Camera	DS-2XC6626G0/P-IZH(R)S(2.8-12mm/8-32mm)
IP Camera	DS-2XC6646G0/P-IZH(R)S(2.8-12mm/8-32mm)
IP Camera	DS-2XC6686G0/P-IZH(R)S(2.8-12mm/8-32mm)