

## Network Camera-V5.8.0 Release Note-E9 (2023-11-08)

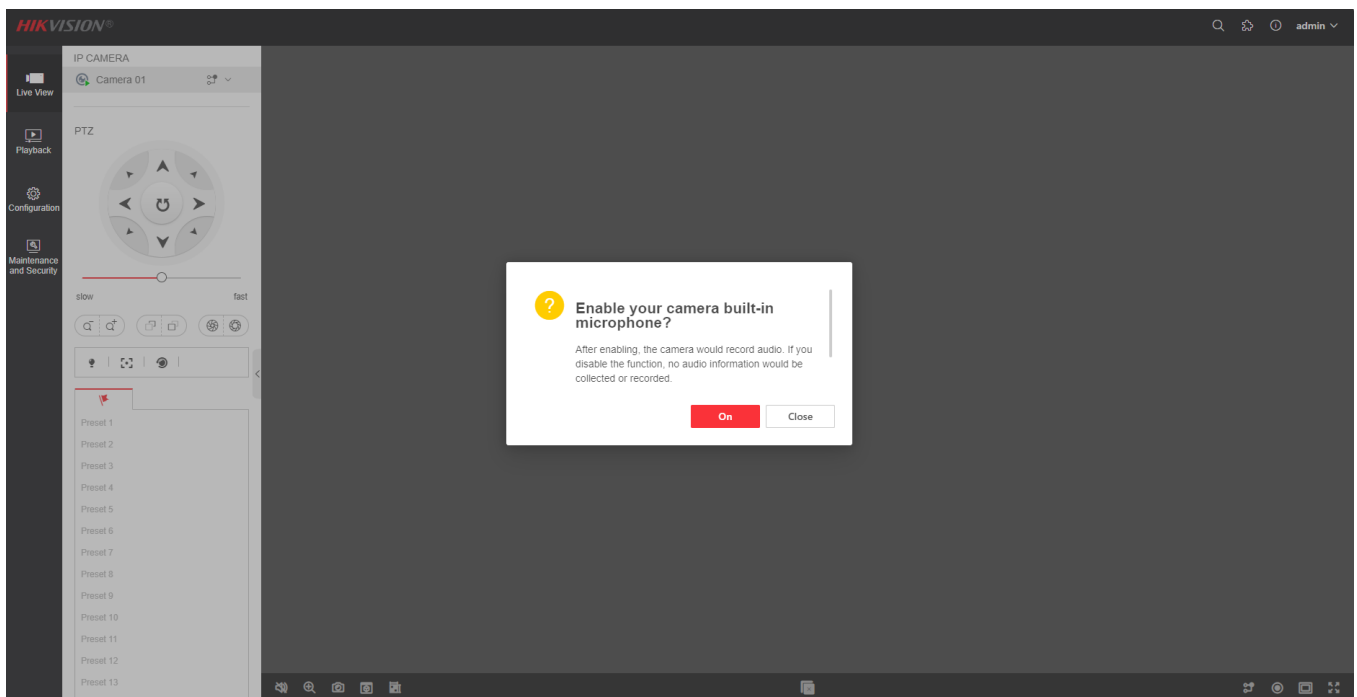
Firmware Basic Information

Firmware version:

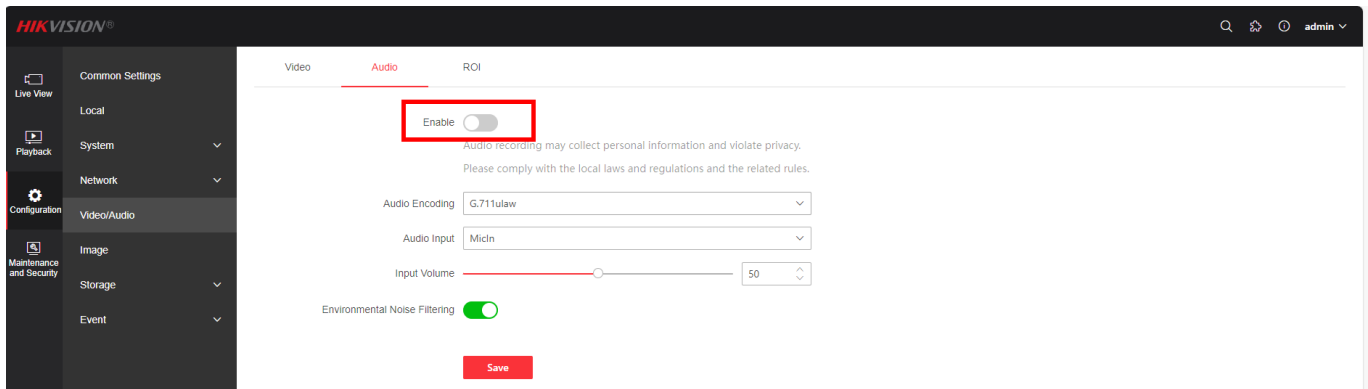
V5.8.0 build231108

### New Features

1. Based on web5.0. When access the web for the first time, a pop-up window will prompt the customer to confirm if enable the built-in mic, no matter the camera's video type is video stream or video & audio. After the customer confirms, there will be no further prompts for the next visit. However, the prompt will appear after restore and default.



2. Audio interface supports audio input switches, corresponding to video streams/video & audio on video pages before.



3. The PT cameras support patrol function.

(1) Only support one path. Each path supports up to 16 preset points, with a maximum of 2 time points per day.

(2) The second patrol path won't start until the first patrol path is complete.

(3) The dwell time at the preset patrol point is 15-3600 seconds, with a default of 15 seconds.

(4) The patrol speed supports 1-7, with a default of 4.

(5) Support clicking the patrol button to perform a patrol path.

(6) If clicked continuously, there will be no response to new patrol commands during the patrol period.

(7) After the inspection is completed, immediately return to the initial position.

(8) The initial position is the position before starting the inspection.

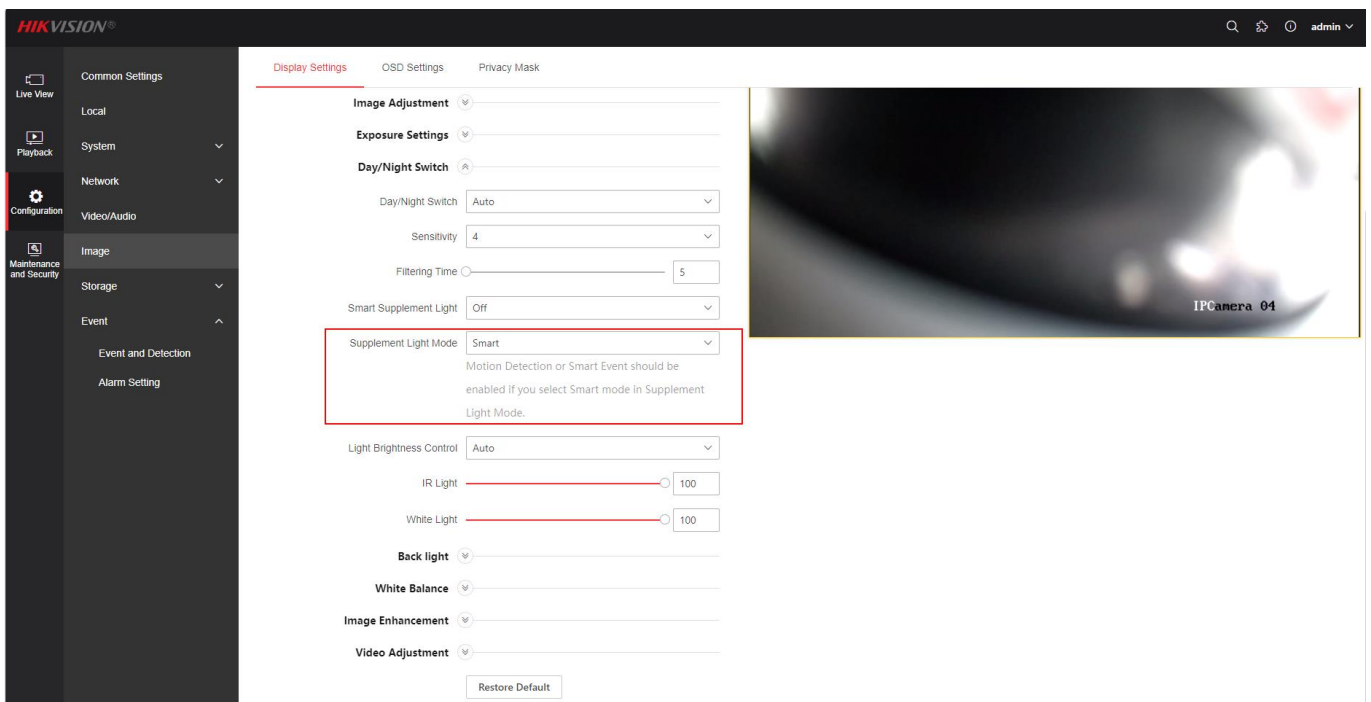
(9) During the patrol process, the patrol cannot be interrupted by monitoring and preset points.

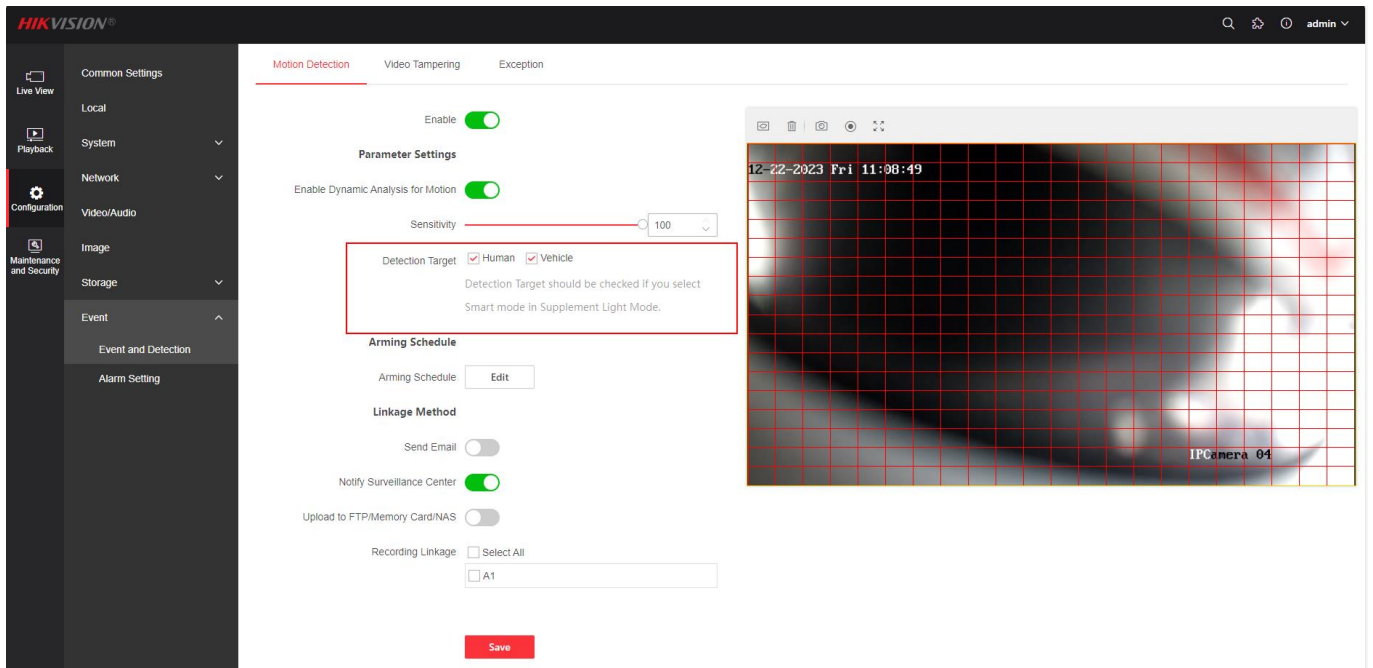
When the customer operates at this time, the web prompts "patrol in progress". However, during the stay period, PT key control and preset points can interrupt the patrol. At the inspection time point, if the PT is in motion, the inspection won't be executed.

(10) Support parameter import and export.

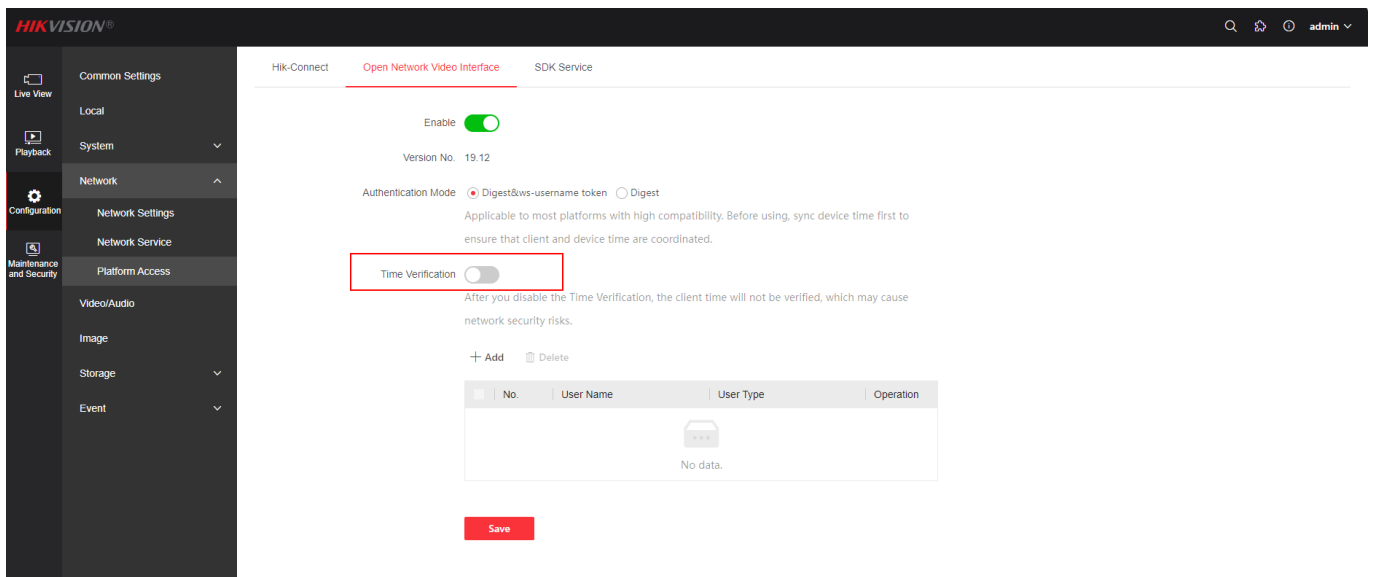
## Modify Function

1. Smart Supplement Light relies on the human or vehicle under Motion Detection. Only enable Motion Detection but without human or vehicle will not trigger the smart supplement light. We'll add tips "Motion Detection or Smart Event should be enabled if you select Smart mode in Supplement Light Mode." below the Supplement Light Mode settings and "Detection Target should be checked if you select Smart mode in Supplement Light Mode." below the Human and Vehicle settings on the interface of Motion Detection to inform the end user.



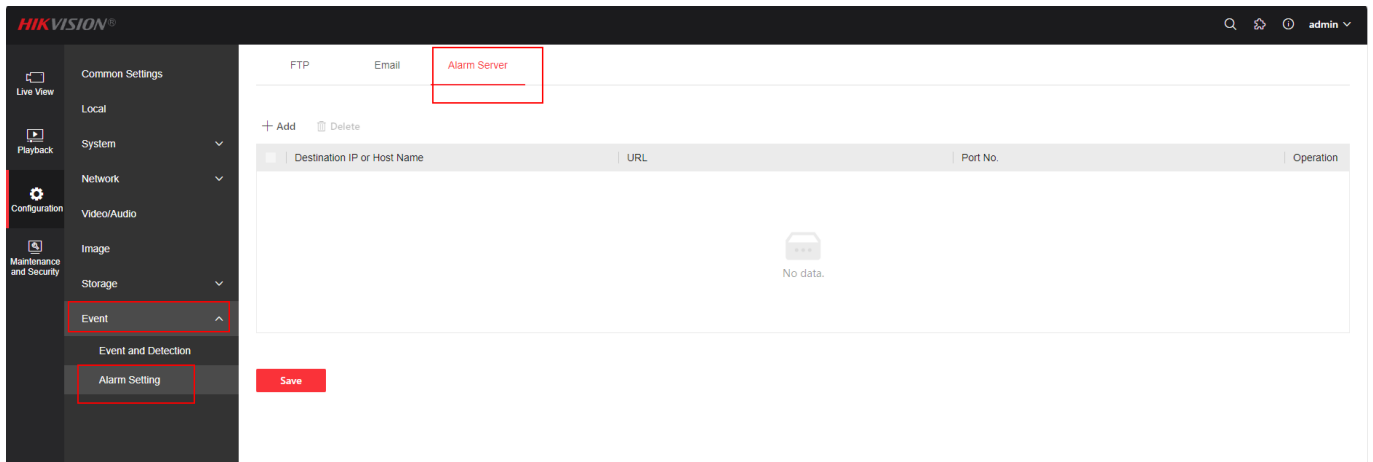


2. Support time verification mechanism under ONVIF's Digest&ws authentication way and add the enable button for customer to choose if use time verification mechanism. Default off.



3. Increase the number of playback channels to 2.

4. Support Alarm Server and only support 1 server.



5. Fix the issue of low speaker sound in the camera during two-way audio on the phone.

## Customer Impact and Recommended Action

This update refers to function/compatibility improvement and will take effect automatically after the Date of Change. We are very sorry for any inconvenience of use-habit changes caused by this action.

For any questions and request for this firmware, please contact our local technical support team.

### Remarks:

- Hikvision reserves the right to change, alter or withdraw the above notification without prior notice.
- Product design and specifications are subject to change without prior notice.
- The Hikvision firmware may contain errors known as errata which may cause the product to deviate from published specifications. Current characterized errata are available on request.
- Hikvision is not liable for any typing or printing errors.

Hikvision Digital Technology CO., Ltd.  
No. 555 Qianmo Road, Binjiang District, Hangzhou 310051,  
China  
Tel: +86-571-8807-5998  
FAX: +86-571-8993-5635  
Email: [overseabusiness@hikvision.com](mailto:overseabusiness@hikvision.com)

## Supported Product List

Product Category	Sub-type	Model Number
IPC 1 Series	IPCE_RC	DS-2CD1021G0-I(2.8mm)(O-STD)
IPC 1 Series	IPCE_RC	DS-2CD1021G0-I(2.8mm)(O-NEU)
IPC 1 Series	IPCE_RC	DS-2CD1021G0-I(4mm)(O-STD)
IPC 1 Series	IPCE_RC	DS-2CD1021G0-I(4mm)(O-NEU)
IPC 1 Series	IPCE_RC	DS-2CD1021G2-IU(2.8mm)(O-STD)
IPC 1 Series	IPCE_RC	DS-2CD1021G2-IU(2.8mm)(O-NEU)
IPC 1 Series	IPCE_RC	DS-2CD1021G2-IU(4mm)(O-STD)
IPC 1 Series	IPCE_RC	DS-2CD1021G2-IU(4mm)(O-NEU)
IPC 1 Series	IPCE_RC	DS-2CD1021G2-LIU(2.8mm)(O-STD)
IPC 1 Series	IPCE_RC	DS-2CD1021G2-LIU(2.8mm)(O-NEU)
IPC 1 Series	IPCE_RC	DS-2CD1021G2-LIU(4mm)(O-STD)
IPC 1 Series	IPCE_RC	DS-2CD1021G2-LIU(4mm)(O-NEU)
IPC 1 Series	IPCE	DS-2CD1023G2-I(2.8mm)(O-STD)
IPC 1 Series	IPCE	DS-2CD1023G2-I(2.8mm)(O-NEU)
IPC 1 Series	IPCE	DS-2CD1023G2-I(4mm)(O-STD)
IPC 1 Series	IPCE	DS-2CD1023G2-I(4mm)(O-NEU)
IPC 1 Series	IPCE	DS-2CD1023G2-IUF(2.8mm)(O-STD)
IPC 1 Series	IPCE	DS-2CD1023G2-IUF(2.8mm)(O-NEU)
IPC 1 Series	IPCE	DS-2CD1023G2-IUF(4mm)(O-STD)
IPC 1 Series	IPCE	DS-2CD1023G2-IUF(4mm)(O-NEU)
IPC 1 Series	IPCE	DS-2CD1023G2-LIU(2.8mm)(O-STD)
IPC 1 Series	IPCE	DS-2CD1023G2-LIU(2.8mm)(O-NEU)
IPC 1 Series	IPCE	DS-2CD1023G2-LIU(4mm)(O-STD)
IPC 1 Series	IPCE	DS-2CD1023G2-LIU(4mm)(O-NEU)
IPC 1 Series	IPCE	DS-2CD1023G2-LIUF(2.8mm)(O-STD)
IPC 1 Series	IPCE	DS-2CD1023G2-LIUF(2.8mm)(O-NEU)
IPC 1 Series	IPCE	DS-2CD1023G2-LIUF(4mm)(O-STD)
IPC 1 Series	IPCE	DS-2CD1023G2-LIUF(4mm)(O-NEU)
IPC 1 Series	IPCE_R	DS-2CD1023G2-LIUF/SL(2.8mm)(O-STD)
IPC 1 Series	IPCE_R	DS-2CD1023G2-LIUF/SL(4mm)(O-STD)
IPC 1 Series	IPCE	DS-2CD1027G2-L(2.8mm)(O-STD)
IPC 1 Series	IPCE	DS-2CD1027G2-L(2.8mm)(O-NEU)
IPC 1 Series	IPCE	DS-2CD1027G2-L(4mm)(O-STD)
IPC 1 Series	IPCE	DS-2CD1027G2-L(4mm)(O-NEU)
IPC 1 Series	IPCE	DS-2CD1027G2-LUF(2.8mm)(O-STD)
IPC 1 Series	IPCE	DS-2CD1027G2-LUF(2.8mm)(O-NEU)
IPC 1 Series	IPCE	DS-2CD1027G2-LUF(4mm)(O-STD)
IPC 1 Series	IPCE	DS-2CD1027G2-LUF(4mm)(O-NEU)
IPC 1 Series	IPCE_C	DS-2CD1031G0-I(2.8mm)(O-STD)
IPC 1 Series	IPCE_C	DS-2CD1031G0-I(2.8mm)(O-NEU)
IPC 1 Series	IPCE_C	DS-2CD1031G0-I(4mm)(O-STD)

IPC 1 Series	IPCE_C	DS-2CD1031G0-I(4mm)(O-NEU)
IPC 1 Series	IPCE_C	DS-2CD1031G2-IU(2.8mm)(O-STD)
IPC 1 Series	IPCE_C	DS-2CD1031G2-IU(2.8mm)(O-NEU)
IPC 1 Series	IPCE_C	DS-2CD1031G2-IU(4mm)(O-STD)
IPC 1 Series	IPCE_C	DS-2CD1031G2-IU(4mm)(O-NEU)
IPC 1 Series	IPCE_C	DS-2CD1031G2-LIU(2.8mm)(O-STD)
IPC 1 Series	IPCE_C	DS-2CD1031G2-LIU(2.8mm)(O-NEU)
IPC 1 Series	IPCE_C	DS-2CD1031G2-LIU(4mm)(O-STD)
IPC 1 Series	IPCE_C	DS-2CD1031G2-LIU(4mm)(O-NEU)
IPC 1 Series	IPCE_RC	DS-2CD1121G0-I(2.8mm)(O-STD)
IPC 1 Series	IPCE_RC	DS-2CD1121G0-I(2.8mm)(O-NEU)
IPC 1 Series	IPCE_RC	DS-2CD1121G0-I(4mm)(O-STD)
IPC 1 Series	IPCE_RC	DS-2CD1121G0-I(4mm)(O-NEU)
IPC 1 Series	IPCE_RC	DS-2CD1121G2-I(2.8mm)(O-STD)
IPC 1 Series	IPCE_RC	DS-2CD1121G2-I(2.8mm)(O-NEU)
IPC 1 Series	IPCE_RC	DS-2CD1121G2-I(4mm)(O-STD)
IPC 1 Series	IPCE_RC	DS-2CD1121G2-I(4mm)(O-NEU)
IPC 1 Series	IPCE	DS-2CD1123G2-I(2.8mm)(O-STD)
IPC 1 Series	IPCE	DS-2CD1123G2-I(2.8mm)(O-NEU)
IPC 1 Series	IPCE	DS-2CD1123G2-I(4mm)(O-STD)
IPC 1 Series	IPCE	DS-2CD1123G2-I(4mm)(O-NEU)
IPC 1 Series	IPCE	DS-2CD1123G2-IUF(2.8mm)(O-STD)
IPC 1 Series	IPCE	DS-2CD1123G2-IUF(2.8mm)(O-NEU)
IPC 1 Series	IPCE	DS-2CD1123G2-IUF(4mm)(O-STD)
IPC 1 Series	IPCE	DS-2CD1123G2-IUF(4mm)(O-NEU)
IPC 1 Series	IPCE	DS-2CD1123G2-LIU(2.8mm)(O-STD)
IPC 1 Series	IPCE	DS-2CD1123G2-LIU(2.8mm)(O-NEU)
IPC 1 Series	IPCE	DS-2CD1123G2-LIU(4mm)(O-STD)
IPC 1 Series	IPCE	DS-2CD1123G2-LIU(4mm)(O-NEU)
IPC 1 Series	IPCE	DS-2CD1123G2-LIUF(2.8mm)(O-STD)
IPC 1 Series	IPCE	DS-2CD1123G2-LIUF(2.8mm)(O-NEU)
IPC 1 Series	IPCE	DS-2CD1123G2-LIUF(4mm)(O-STD)
IPC 1 Series	IPCE	DS-2CD1123G2-LIUF(4mm)(O-NEU)
IPC 1 Series	IPCE_R	DS-2CD1127G2H-LIU(2.8mm)(O-STD)
IPC 1 Series	IPCE_R	DS-2CD1127G2H-LIU(2.8mm)(O-NEU)
IPC 1 Series	IPCE_R	DS-2CD1127G2H-LIU(4mm)(O-STD)
IPC 1 Series	IPCE_R	DS-2CD1127G2H-LIU(4mm)(O-NEU)
IPC 1 Series	IPCE_R	DS-2CD1127G2H-LIUF(2.8mm)(O-STD)
IPC 1 Series	IPCE_R	DS-2CD1127G2H-LIUF(2.8mm)(O-NEU)
IPC 1 Series	IPCE_R	DS-2CD1127G2H-LIUF(4mm)(O-STD)
IPC 1 Series	IPCE_R	DS-2CD1127G2H-LIUF(4mm)(O-NEU)
IPC 1 Series	IPCE	DS-2CD1127G2-L(2.8mm)(O-STD)
IPC 1 Series	IPCE	DS-2CD1127G2-L(2.8mm)(O-NEU)
IPC 1 Series	IPCE	DS-2CD1127G2-L(4mm)(O-STD)
IPC 1 Series	IPCE	DS-2CD1127G2-L(4mm)(O-NEU)

IPC 1 Series	IPCE	DS-2CD1127G2-LUF(2.8mm)(O-STD)
IPC 1 Series	IPCE	DS-2CD1127G2-LUF(2.8mm)(O-NEU)
IPC 1 Series	IPCE	DS-2CD1127G2-LUF(4mm)(O-STD)
IPC 1 Series	IPCE	DS-2CD1127G2-LUF(4mm)(O-NEU)
IPC 1 Series	IPCE_C	DS-2CD1131G0-I(2.8mm)(O-STD)
IPC 1 Series	IPCE_C	DS-2CD1131G0-I(2.8mm)(O-NEU)
IPC 1 Series	IPCE_C	DS-2CD1131G0-I(4mm)(O-STD)
IPC 1 Series	IPCE_C	DS-2CD1131G0-I(4mm)(O-NEU)
IPC 1 Series	IPCE_C	DS-2CD1131G2-I(2.8mm)(O-STD)
IPC 1 Series	IPCE_C	DS-2CD1131G2-I(2.8mm)(O-NEU)
IPC 1 Series	IPCE_C	DS-2CD1131G2-I(4mm)(O-STD)
IPC 1 Series	IPCE_C	DS-2CD1131G2-I(4mm)(O-NEU)
IPC 1 Series	IPCE_RC	DS-2CD1321G0-I(2.8mm)(O-STD)
IPC 1 Series	IPCE_RC	DS-2CD1321G0-I(2.8mm)(O-NEU)
IPC 1 Series	IPCE_RC	DS-2CD1321G0-I(4mm)(O-STD)
IPC 1 Series	IPCE_RC	DS-2CD1321G0-I(4mm)(O-NEU)
IPC 1 Series	IPCE_RC	DS-2CD1321G2-IU(2.8mm)(O-STD)
IPC 1 Series	IPCE_RC	DS-2CD1321G2-IU(2.8mm)(O-NEU)
IPC 1 Series	IPCE_RC	DS-2CD1321G2-IU(4mm)(O-STD)
IPC 1 Series	IPCE_RC	DS-2CD1321G2-IU(4mm)(O-NEU)
IPC 1 Series	IPCE_RC	DS-2CD1321G2-LIU(2.8mm)(O-STD)
IPC 1 Series	IPCE_RC	DS-2CD1321G2-LIU(2.8mm)(O-NEU)
IPC 1 Series	IPCE_RC	DS-2CD1321G2-LIU(4mm)(O-STD)
IPC 1 Series	IPCE_RC	DS-2CD1321G2-LIU(4mm)(O-NEU)
IPC 1 Series	IPCE	DS-2CD1323G2-I(2.8mm)(T)(O-STD)
IPC 1 Series	IPCE	DS-2CD1323G2-I(2.8mm)(O-STD)
IPC 1 Series	IPCE	DS-2CD1323G2-I(2.8mm)(O-NEU)
IPC 1 Series	IPCE	DS-2CD1323G2-I(4mm)(T)(O-STD)
IPC 1 Series	IPCE	DS-2CD1323G2-I(4mm)(O-STD)
IPC 1 Series	IPCE	DS-2CD1323G2-I(4mm)(O-NEU)
IPC 1 Series	IPCE	DS-2CD1323G2-IUF(2.8mm)(O-STD)
IPC 1 Series	IPCE	DS-2CD1323G2-IUF(2.8mm)(O-NEU)
IPC 1 Series	IPCE	DS-2CD1323G2-IUF(4mm)(O-STD)
IPC 1 Series	IPCE	DS-2CD1323G2-IUF(4mm)(O-NEU)
IPC 1 Series	IPCE	DS-2CD1323G2-LIU(2.8mm)(O-STD)
IPC 1 Series	IPCE	DS-2CD1323G2-LIU(2.8mm)(O-NEU)
IPC 1 Series	IPCE	DS-2CD1323G2-LIU(4mm)(O-STD)
IPC 1 Series	IPCE	DS-2CD1323G2-LIU(4mm)(O-NEU)
IPC 1 Series	IPCE	DS-2CD1323G2-LIUF(2.8mm)(O-STD)
IPC 1 Series	IPCE	DS-2CD1323G2-LIUF(2.8mm)(O-NEU)
IPC 1 Series	IPCE	DS-2CD1323G2-LIUF(4mm)(O-STD)
IPC 1 Series	IPCE	DS-2CD1323G2-LIUF(4mm)(O-NEU)
IPC 1 Series	IPCE_R	DS-2CD1323G2-LIUF/SL(2.8mm)(O-STD)
IPC 1 Series	IPCE_R	DS-2CD1323G2-LIUF/SL(2.8mm)(O-NEU)
IPC 1 Series	IPCE_R	DS-2CD1323G2-LIUF/SL(4mm)(O-STD)



IPC 1 Series	IPCE_R	DS-2CD1323G2-LIUF/SL(4mm)(O-NEU)
IPC 1 Series	IPCE_R	DS-2CD1327G2H-LIUF(2.8mm)(O-STD)
IPC 1 Series	IPCE_R	DS-2CD1327G2H-LIUF(4mm)(O-STD)
IPC 1 Series	IPCE	DS-2CD1327G2-L(2.8mm)(O-STD)
IPC 1 Series	IPCE	DS-2CD1327G2-L(2.8mm)(O-NEU)
IPC 1 Series	IPCE	DS-2CD1327G2-L(4mm)(O-STD)
IPC 1 Series	IPCE	DS-2CD1327G2-L(4mm)(O-NEU)
IPC 1 Series	IPCE	DS-2CD1327G2-LUF(2.8mm)(O-STD)
IPC 1 Series	IPCE	DS-2CD1327G2-LUF(2.8mm)(O-NEU)
IPC 1 Series	IPCE	DS-2CD1327G2-LUF(4mm)(O-STD)
IPC 1 Series	IPCE	DS-2CD1327G2-LUF(4mm)(O-NEU)
IPC 1 Series	IPCE_C	DS-2CD1331G0-I(2.8mm)(O-STD)
IPC 1 Series	IPCE_C	DS-2CD1331G0-I(2.8mm)(O-NEU)
IPC 1 Series	IPCE_C	DS-2CD1331G0-I(4mm)(O-STD)
IPC 1 Series	IPCE_C	DS-2CD1331G0-I(4mm)(O-NEU)
IPC 1 Series	IPCE_C	DS-2CD1331G2-IU(2.8mm)(O-STD)
IPC 1 Series	IPCE_C	DS-2CD1331G2-IU(2.8mm)(O-NEU)
IPC 1 Series	IPCE_C	DS-2CD1331G2-IU(4mm)(O-STD)
IPC 1 Series	IPCE_C	DS-2CD1331G2-IU(4mm)(O-NEU)
IPC 1 Series	IPCE_C	DS-2CD1331G2-LIU(2.8mm)(O-STD)
IPC 1 Series	IPCE_C	DS-2CD1331G2-LIU(2.8mm)(O-NEU)
IPC 1 Series	IPCE_C	DS-2CD1331G2-LIU(4mm)(O-STD)
IPC 1 Series	IPCE_C	DS-2CD1331G2-LIU(4mm)(O-NEU)
IPC 1 Series	IPCE	DS-2CD1T23G2-I(4mm)(T)(O-STD)
IPC 1 Series	IPCE	DS-2CD1T23G2-I(4mm)(O-STD)
IPC 1 Series	IPCE	DS-2CD1T23G2-I(4mm)(O-NEU)
IPC 1 Series	IPCE	DS-2CD1T23G2-I(6mm)(T)(O-STD)
IPC 1 Series	IPCE	DS-2CD1T23G2-I(6mm)(O-STD)
IPC 1 Series	IPCE	DS-2CD1T23G2-I(6mm)(O-NEU)
IPC 1 Series	IPCE	DS-2CD1T23G2-IUF(4mm)(O-STD)
IPC 1 Series	IPCE	DS-2CD1T23G2-IUF(4mm)(O-NEU)
IPC 1 Series	IPCE	DS-2CD1T23G2-IUF(6mm)(O-STD)
IPC 1 Series	IPCE	DS-2CD1T23G2-IUF(6mm)(O-NEU)
IPC 1 Series	IPCE	DS-2CD1T23G2-LIU(4mm)(O-STD)
IPC 1 Series	IPCE	DS-2CD1T23G2-LIU(4mm)(O-NEU)
IPC 1 Series	IPCE	DS-2CD1T23G2-LIU(6mm)(O-STD)
IPC 1 Series	IPCE	DS-2CD1T23G2-LIU(6mm)(O-NEU)
IPC 1 Series	IPCE	DS-2CD1T23G2-LIUF(4mm)(O-STD)
IPC 1 Series	IPCE	DS-2CD1T23G2-LIUF(4mm)(O-NEU)
IPC 1 Series	IPCE	DS-2CD1T23G2-LIUF(6mm)(O-STD)
IPC 1 Series	IPCE	DS-2CD1T23G2-LIUF(6mm)(O-NEU)
IPC 1 Series	IPCE_R	DS-2CD1T23G2-LIUF/SL(4mm)(O-STD)
IPC 1 Series	IPCE_R	DS-2CD1T23G2-LIUF/SL(4mm)(O-NEU)
IPC 1 Series	IPCE_R	DS-2CD1T23G2-LIUF/SL(6mm)(O-STD)
IPC 1 Series	IPCE_R	DS-2CD1T23G2-LIUF/SL(6mm)(O-NEU)

IPC 1 Series	IPCE_R	DS-2CD1T27G2H-LIUF(2.8mm)(O-STD)
IPC 1 Series	IPCE_R	DS-2CD1T27G2H-LIUF(4mm)(O-STD)
IPC 1 Series	IPCE	DS-2CD1T27G2-L(4mm)(O-STD)
IPC 1 Series	IPCE	DS-2CD1T27G2-L(4mm)(O-NEU)
IPC 1 Series	IPCE	DS-2CD1T27G2-L(6mm)(O-STD)
IPC 1 Series	IPCE	DS-2CD1T27G2-L(6mm)(O-NEU)
IPC 1 Series	IPCE	DS-2CD1T27G2-LUF(4mm)(O-STD)
IPC 1 Series	IPCE	DS-2CD1T27G2-LUF(4mm)(O-NEU)
IPC 1 Series	IPCE	DS-2CD1T27G2-LUF(6mm)(O-STD)
IPC 1 Series	IPCE	DS-2CD1T27G2-LUF(6mm)(O-NEU)
IPC 3 Series	IPCE	DS-2CD3021G2E-I(2.8mm)(O-STD)
IPC 3 Series	IPCE	DS-2CD3021G2E-I(2.8mm)(O-NEU)
IPC 3 Series	IPCE	DS-2CD3021G2E-I(4mm)(O-STD)
IPC 3 Series	IPCE	DS-2CD3021G2E-I(4mm)(O-NEU)
IPC 3 Series	IPCE	DS-2CD3021G2E-LIU(2.8mm)(O-STD)
IPC 3 Series	IPCE	DS-2CD3021G2E-LIU(2.8mm)(O-NEU)
IPC 3 Series	IPCE	DS-2CD3021G2E-LIU(4mm)(O-STD)
IPC 3 Series	IPCE	DS-2CD3021G2E-LIU(4mm)(O-NEU)
IPC 3 Series	IPCE	DS-2CD3121G2E-I(2.8mm)(O-STD)
IPC 3 Series	IPCE	DS-2CD3121G2E-I(2.8mm)(O-NEU)
IPC 3 Series	IPCE	DS-2CD3121G2E-I(4mm)(O-STD)
IPC 3 Series	IPCE	DS-2CD3121G2E-I(4mm)(O-NEU)
IPC 3 Series	IPCE	DS-2CD3121G2E-LIU(2.8mm)(O-STD)
IPC 3 Series	IPCE	DS-2CD3121G2E-LIU(2.8mm)(O-NEU)
IPC 3 Series	IPCE	DS-2CD3121G2E-LIU(4mm)(O-STD)
IPC 3 Series	IPCE	DS-2CD3121G2E-LIU(4mm)(O-NEU)
IPC 3 Series	IPCE	DS-2CD3321G2E-I(2.8mm)(O-STD)
IPC 3 Series	IPCE	DS-2CD3321G2E-I(2.8mm)(O-NEU)
IPC 3 Series	IPCE	DS-2CD3321G2E-I(4mm)(O-STD)
IPC 3 Series	IPCE	DS-2CD3321G2E-I(4mm)(O-NEU)
IPC 3 Series	IPCE	DS-2CD3321G2E-LIU(2.8mm)(O-STD)
IPC 3 Series	IPCE	DS-2CD3321G2E-LIU(2.8mm)(O-NEU)
IPC 3 Series	IPCE	DS-2CD3321G2E-LIU(4mm)(O-STD)
IPC 3 Series	IPCE	DS-2CD3321G2E-LIU(4mm)(O-NEU)
IPC Wireless Series	IPCE	DS-2CV1023G2-LIDW(2.8mm)(O-STD)/Suit
IPC Wireless Series	IPCE	DS-2CV1023G2-LIDW(4mm)(O-STD)/Suit
IPC Wireless Series	IPCE	DS-2CV1023G2-LIDW(6mm)(O-STD)/Suit
IPC Wireless Series	IPCE	DS-2CV1123G2-IDW(2.8mm)(O-STD)/Suit
IPC Wireless Series	IPCE	DS-2CV1123G2-IDW(4mm)(O-STD)/Suit
DE Series	IPCE_R	DS-2DE2E200IWG-E(2.8mm)(O-STD)(Prototype)
DE Series	IPCE_R	DS-2DE2E200IWG-E(4mm)(O-STD)(Prototype)
IPC HiWatch Series	IPCE	HWI-B120HA(2.8mm)(HiWatch STD)
IPC HiWatch Series	IPCE	HWI-B120HA(4mm)(HiWatch STD)
IPC HiWatch Series	IPCE	HWI-B120HA-LD/W(2.8mm)(HiWatch STD)/Suit
IPC HiWatch Series	IPCE	HWI-B120HA-LD/W(4mm)(HiWatch STD)/Suit

IPC HiWatch Series	IPCE	HWI-B120HA-LD/W(6mm)(HiWatch STD)/Suit
IPC HiWatch Series	IPCE	HWI-B120HA-LU(2.8mm)(HiWatch STD)
IPC HiWatch Series	IPCE	HWI-B120HA-LU(4mm)(HiWatch STD)
IPC HiWatch Series	IPCE_R	HWI-B120HA-LUF/SL(2.8mm)(HiWatch STD)
IPC HiWatch Series	IPCE_R	HWI-B120HA-LUF/SL(4mm)(HiWatch STD)
IPC HiWatch Series	IPCE_RC	HWI-B121H-C(2.8mm)(HiWatch STD)
IPC HiWatch Series	IPCE_RC	HWI-B121H-C(4mm)(HiWatch STD)
IPC HiWatch Series	IPCE	HWI-B129HA(2.8mm)(HiWatch STD)
IPC HiWatch Series	IPCE	HWI-B129HA(4mm)(HiWatch STD)
IPC HiWatch Series	IPCE_C	HWI-B131H-C(2.8mm)(HiWatch STD)
IPC HiWatch Series	IPCE_C	HWI-B131H-C(4mm)(HiWatch STD)
IPC HiWatch Series	IPCE	HWI-B420HA(4mm)(HiWatch STD)
IPC HiWatch Series	IPCE	HWI-B420HA(6mm)(HiWatch STD)
IPC HiWatch Series	IPCE	HWI-B420HA-LU(4mm)(HiWatch STD)
IPC HiWatch Series	IPCE	HWI-B420HA-LU(6mm)(HiWatch STD)
IPC HiWatch Series	IPCE_R	HWI-B420HA-LUF/SL(4mm)(HiWatch STD)
IPC HiWatch Series	IPCE_R	HWI-B420HA-LUF/SL(6mm)(HiWatch STD)
IPC HiWatch Series	IPCE	HWI-B429HA(4mm)(HiWatch STD)
IPC HiWatch Series	IPCE	HWI-B429HA(6mm)(HiWatch STD)
IPC HiWatch Series	IPCE	HWI-D120HA(2.8mm)(HiWatch STD)
IPC HiWatch Series	IPCE	HWI-D120HA(4mm)(HiWatch STD)
IPC HiWatch Series	IPCE	HWI-D120HA-D/W(2.8mm)(HiWatch STD)/Suit
IPC HiWatch Series	IPCE	HWI-D120HA-D/W(4mm)(HiWatch STD)/Suit
IPC HiWatch Series	IPCE	HWI-D120HA-LU(2.8mm)(HiWatch STD)
IPC HiWatch Series	IPCE	HWI-D120HA-LU(4mm)(HiWatch STD)
IPC HiWatch Series	IPCE_RC	HWI-D121H-C(2.8mm)(HiWatch STD)
IPC HiWatch Series	IPCE_RC	HWI-D121H-C(4mm)(HiWatch STD)
IPC HiWatch Series	IPCE	HWI-D129HA(2.8mm)(HiWatch STD)
IPC HiWatch Series	IPCE	HWI-D129HA(4mm)(HiWatch STD)
IPC HiWatch Series	IPCE_R	HWI-D129HA-LU(2.8mm)(HiWatch STD)
IPC HiWatch Series	IPCE_R	HWI-D129HA-LU(4mm)(HiWatch STD)
IPC HiWatch Series	IPCE_C	HWI-D131H-C(2.8mm)(HiWatch STD)
IPC HiWatch Series	IPCE_C	HWI-D131H-C(4mm)(HiWatch STD)
IPC HiWatch Series	IPCE	HWI-T220HA(2.8mm)(HiWatch STD)
IPC HiWatch Series	IPCE	HWI-T220HA(4mm)(HiWatch STD)
IPC HiWatch Series	IPCE	HWI-T220HA-LU(2.8mm)(HiWatch STD)
IPC HiWatch Series	IPCE	HWI-T220HA-LU(4mm)(HiWatch STD)
IPC HiWatch Series	IPCE_R	HWI-T220HA-LUF/SL(2.8mm)(HiWatch STD)
IPC HiWatch Series	IPCE_R	HWI-T220HA-LUF/SL(4mm)(HiWatch STD)
IPC HiWatch Series	IPCE_RC	HWI-T221H-C(2.8mm)(HiWatch STD)
IPC HiWatch Series	IPCE_RC	HWI-T221H-C(4mm)(HiWatch STD)
IPC HiWatch Series	IPCE	HWI-T229HA(2.8mm)(HiWatch STD)
IPC HiWatch Series	IPCE	HWI-T229HA(4mm)(HiWatch STD)
IPC HiWatch Series	IPCE_C	HWI-T231H-C(2.8mm)(HiWatch STD)
IPC HiWatch Series	IPCE_C	HWI-T231H-C(4mm)(HiWatch STD)

IPC HiLook Series	IPCE_HL	IPC-B120HA(2.8mm)(HiLook STD)
IPC HiLook Series	IPCE_HL	IPC-B120HA(4mm)(HiLook STD)
IPC HiLook Series	IPCE_HL	IPC-B120HA-LD/W(2.8mm)(HiLook STD)/Suit
IPC HiLook Series	IPCE_HL	IPC-B120HA-LD/W(4mm)(HiLook STD)/Suit
IPC HiLook Series	IPCE_HL	IPC-B120HA-LD/W(6mm)(HiLook STD)/Suit
IPC HiLook Series	IPCE_HL	IPC-B120HA-LU(2.8mm)(HiLook STD)
IPC HiLook Series	IPCE_HL	IPC-B120HA-LU(4mm)(HiLook STD)
IPC HiLook Series	IPCE_HLC	IPC-B120HA-LUC(2.8mm)(HiLook STD)
IPC HiLook Series	IPCE_HLC	IPC-B120HA-LUC(4mm)(HiLook STD)
IPC HiLook Series	IPCE_HLR	IPC-B120HA-LUF/SL(2.8mm)(HiLook STD)
IPC HiLook Series	IPCE_HLR	IPC-B120HA-LUF/SL(4mm)(HiLook STD)
IPC HiLook Series	IPCE_HLC	IPC-B120HA-UC(2.8mm)(HiLook STD)
IPC HiLook Series	IPCE_HLC	IPC-B120HA-UC(4mm)(HiLook STD)
IPC HiLook Series	IPCE_HLC	IPC-B121H-C(2.8mm)(HiLook STD)
IPC HiLook Series	IPCE_HLC	IPC-B121H-C(4mm)(HiLook STD)
IPC HiLook Series	IPCE_HL	IPC-B129HA(2.8mm)(HiLook STD)
IPC HiLook Series	IPCE_HL	IPC-B129HA(4mm)(HiLook STD)
IPC HiLook Series	IPCE_HLC	IPC-B130HA-LUC(2.8mm)(HiLook STD)
IPC HiLook Series	IPCE_HLC	IPC-B130HA-LUC(4mm)(HiLook STD)
IPC HiLook Series	IPCE_HLC	IPC-B130HA-UC(2.8mm)(HiLook STD)
IPC HiLook Series	IPCE_HLC	IPC-B130HA-UC(4mm)(HiLook STD)
IPC HiLook Series	IPCE_HLC	IPC-B131H-C(2.8mm)(HiLook STD)
IPC HiLook Series	IPCE_HLC	IPC-B131H-C(4mm)(HiLook STD)
IPC HiLook Series	IPCE_HL	IPC-B420HA(4mm)(HiLook STD)
IPC HiLook Series	IPCE_HL	IPC-B420HA(6mm)(HiLook STD)
IPC HiLook Series	IPCE_HL	IPC-B420HA-LU(4mm)(HiLook STD)
IPC HiLook Series	IPCE_HL	IPC-B420HA-LU(6mm)(HiLook STD)
IPC HiLook Series	IPCE_HLR	IPC-B420HA-LUF/SL(4mm)(HiLook STD)
IPC HiLook Series	IPCE_HLR	IPC-B420HA-LUF/SL(6mm)(HiLook STD)
IPC HiLook Series	IPCE_HL	IPC-B429HA(4mm)(HiLook STD)
IPC HiLook Series	IPCE_HL	IPC-B429HA(6mm)(HiLook STD)
IPC HiLook Series	IPCE_HL	IPC-D120HA(2.8mm)(HiLook STD)
IPC HiLook Series	IPCE_HL	IPC-D120HA(4mm)(HiLook STD)
IPC HiLook Series	IPCE_HLC	IPC-D120HA-C(2.8mm)(HiLook STD)
IPC HiLook Series	IPCE_HLC	IPC-D120HA-C(4mm)(HiLook STD)
IPC HiLook Series	IPCE_HL	IPC-D120HA-D/W(2.8mm)(HiLook STD)/Suit
IPC HiLook Series	IPCE_HL	IPC-D120HA-D/W(4mm)(HiLook STD)/Suit
IPC HiLook Series	IPCE_HL	IPC-D120HA-LU(2.8mm)(HiLook STD)
IPC HiLook Series	IPCE_HL	IPC-D120HA-LU(4mm)(HiLook STD)
IPC HiLook Series	IPCE_HLC	IPC-D121H-C(2.8mm)(HiLook STD)
IPC HiLook Series	IPCE_HLC	IPC-D121H-C(4mm)(HiLook STD)
IPC HiLook Series	IPCE_HL	IPC-D129HA(2.8mm)(HiLook STD)
IPC HiLook Series	IPCE_HL	IPC-D129HA(4mm)(HiLook STD)
IPC HiLook Series	IPCE_HLR	IPC-D129HA-LU(2.8mm)(HiLook STD)
IPC HiLook Series	IPCE_HLR	IPC-D129HA-LU(4mm)(HiLook STD)

IPC HiLook Series	IPCE_HLC	IPC-D130HA-C(2.8mm)(HiLook STD)
IPC HiLook Series	IPCE_HLC	IPC-D130HA-C(4mm)(HiLook STD)
IPC HiLook Series	IPCE_HLC	IPC-D131H-C(2.8mm)(HiLook STD)
IPC HiLook Series	IPCE_HLC	IPC-D131H-C(4mm)(HiLook STD)
IPC HiLook Series	IPCE_HL	IPC-T220HA(2.8mm)(HiLook STD)
IPC HiLook Series	IPCE_HL	IPC-T220HA(4mm)(HiLook STD)
IPC HiLook Series	IPCE_HL	IPC-T220HA-LU(2.8mm)(HiLook STD)
IPC HiLook Series	IPCE_HL	IPC-T220HA-LU(4mm)(HiLook STD)
IPC HiLook Series	IPCE_HLC	IPC-T220HA-LUC(2.8mm)(HiLook STD)
IPC HiLook Series	IPCE_HLC	IPC-T220HA-LUC(4mm)(HiLook STD)
IPC HiLook Series	IPCE_HLR	IPC-T220HA-LUF/SL(2.8mm)(HiLook STD)
IPC HiLook Series	IPCE_HLR	IPC-T220HA-LUF/SL(4mm)(HiLook STD)
IPC HiLook Series	IPCE_HLC	IPC-T220HA-UC(2.8mm)(HiLook STD)
IPC HiLook Series	IPCE_HLC	IPC-T220HA-UC(4mm)(HiLook STD)
IPC HiLook Series	IPCE_HLC	IPC-T221H-C(2.8mm)(HiLook STD)
IPC HiLook Series	IPCE_HLC	IPC-T221H-C(4mm)(HiLook STD)
IPC HiLook Series	IPCE_HL	IPC-T229HA(2.8mm)(HiLook STD)
IPC HiLook Series	IPCE_HL	IPC-T229HA(4mm)(HiLook STD)
IPC HiLook Series	IPCE_HLC	IPC-T230HA-LUC(2.8mm)(HiLook STD)
IPC HiLook Series	IPCE_HLC	IPC-T230HA-LUC(4mm)(HiLook STD)
IPC HiLook Series	IPCE_HLC	IPC-T230HA-UC(2.8mm)(HiLook STD)
IPC HiLook Series	IPCE_HLC	IPC-T230HA-UC(4mm)(HiLook STD)
IPC HiLook Series	IPCE_HLC	IPC-T231H-C(2.8mm)(HiLook STD)
IPC HiLook Series	IPCE_HLC	IPC-T231H-C(4mm)(HiLook STD)