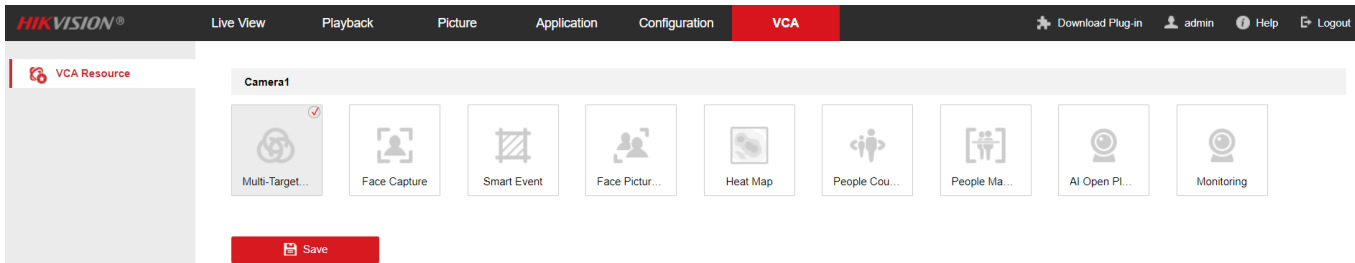


Network Camera Firmware Version: V5.8.20 Release Note

Firmware Basic Information	Firmware Version: V5.8.20 build 230309 V5.8.20 build 230522
-----------------------------------	--

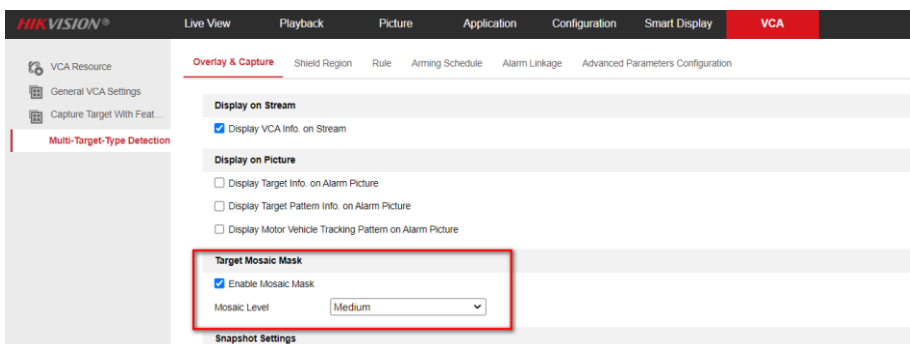
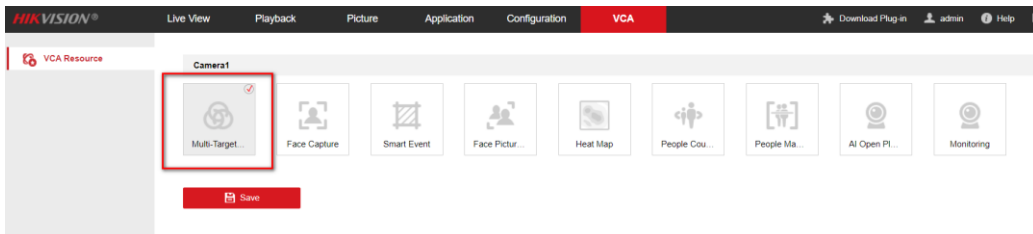
1. New Features

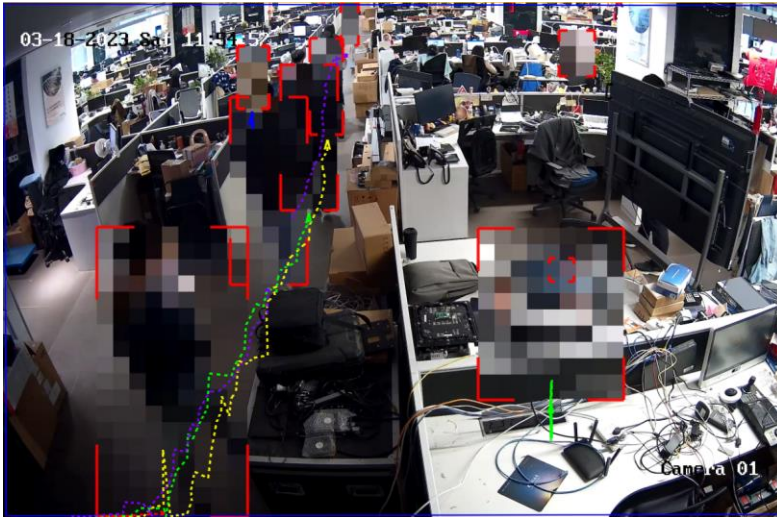
- Support Smart Multi-Target-Type Detection, Face Capture, Smart Event, Face Picture Comparison, Heat Map, People Counting, People Management, AI Open Platform and Monitoring VCA resource switchable.



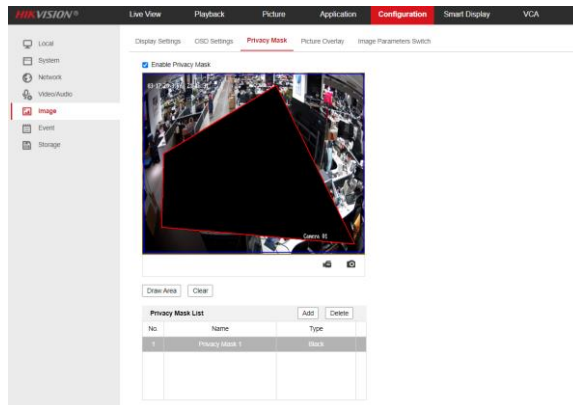
- Support Target Mosaic Mask function on Multi-Target-Type Detection mode.

Enter **VCA - Multi-Target-Type Detection – Overlay& Capture- Target Mosaic Mask** to enable it.

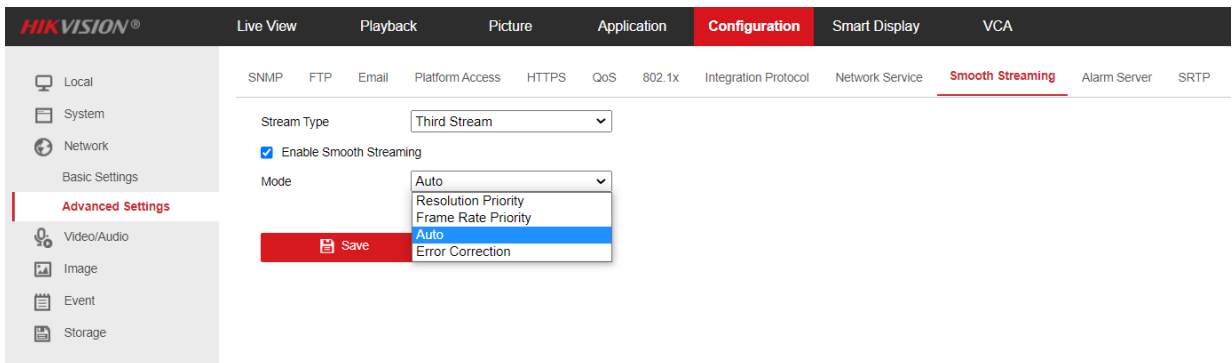




- Support drawing polygon 4-sides area of private mask.



- Third Stream support NPQ (Smooth Streaming). When Smooth Streaming is enabled, functions such as, variable bitrate, MJPEG, SVC, EPTZ, and Target Cropping, are not supported.



2. Modify Features

NA

Customer Impact and Recommended Action

This update refers to function/compatibility improvement and will take effect automatically after the Date of Change. We are very sorry for any inconvenience of use-habit changes caused by this action. For any questions and request for this firmware, please contact our local technical support team.

Remarks:

- Hikvision reserves the right to change, alter or withdraw the above notification without prior notice.
- Product design and specifications are subject to change without prior notice.
- The Hikvision firmware may contain errors known as errata which may cause the product to deviate from published specifications. Current characterized errata are available on request.
- Hikvision is not liable for any typing or printing errors.

Hikvision Digital Technology CO., Ltd.
No. 555 Qianmo Road, Binjiang District, Hangzhou
310051, China
Tel: +86-571-8807-5998

Supported Product List	
Product Category	Model Number
7 Series DeepinView Camera	iDS-2CD7A45G0-IZ(H)S(Y)(4.7-118mm)

Note: Models in red font are newly released models.