

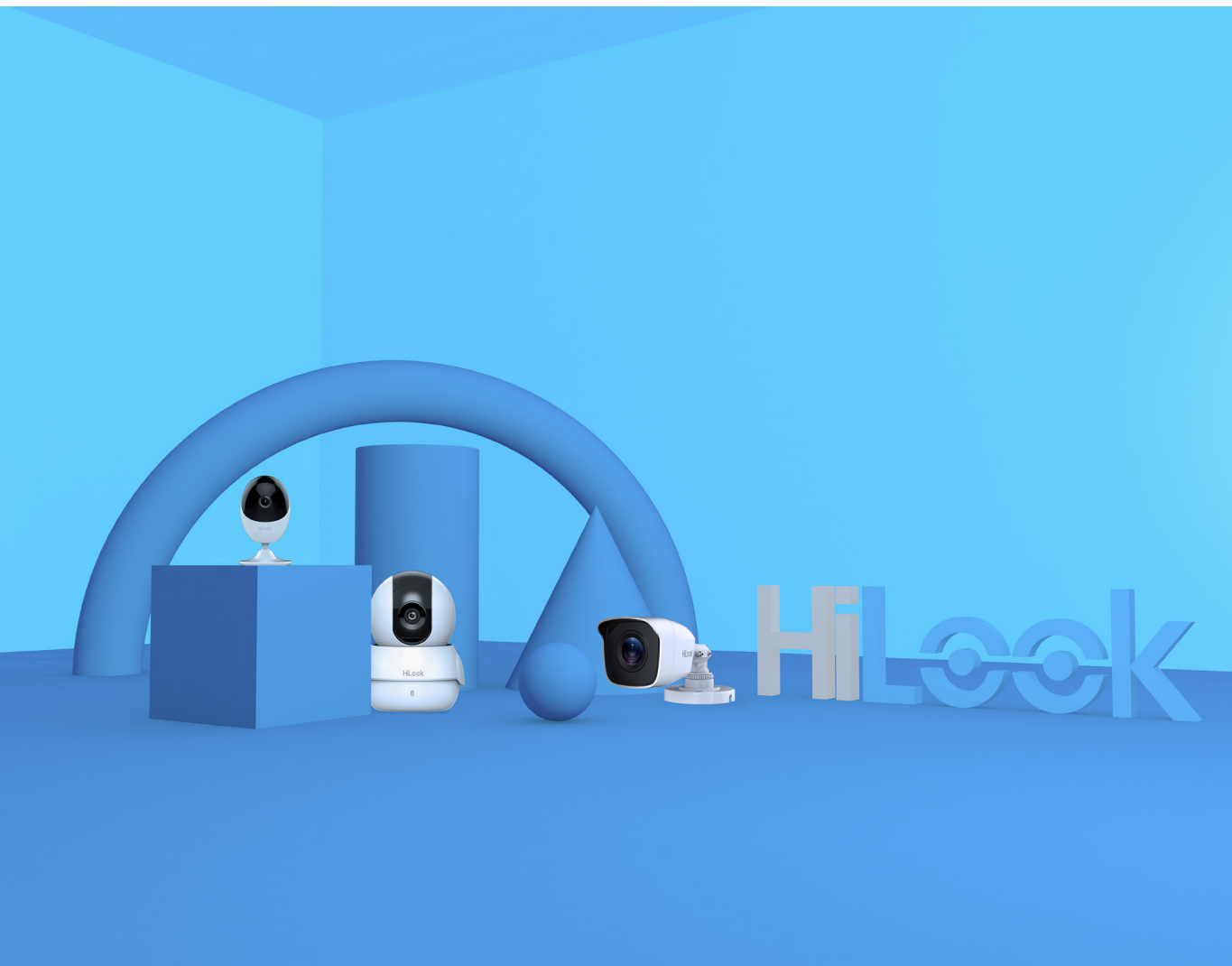
# HiLook

Great View, Great Value

PRODUCT CATALOG

2021 H1

IP Solution / Turbo HD Solution / Transmission



## Table of Contents

HiLook Overview	1
<hr/>	
Key Features	
Safe and Sound	4
See Who's There, Wherever and Whenever	8
Click and Connect	9
<hr/>	
Product Showcase	
IP Solution	12
Turbo HD Solution	23
Transmission Products	38
Accessories	40
<hr/>	



## VIDEO SECURITY SOLUTION

Looking for High Performance? Looking for Low Price? Look at HiLook. HiLook, Hikvision's offshoot brand, hits the bullseye for the entry-level video security market, providing very cost-effective, easy-to-use and reliable products and services.



RELIABLE  
QUALITY



EASE OF USE



ATTRACTIVE  
PRICE

## DIVERSE PRODUCT LINES FOR VARIOUS DEMANDS

HiLook offers an extensive portfolio of products and solutions to meet the wide range of user demands.

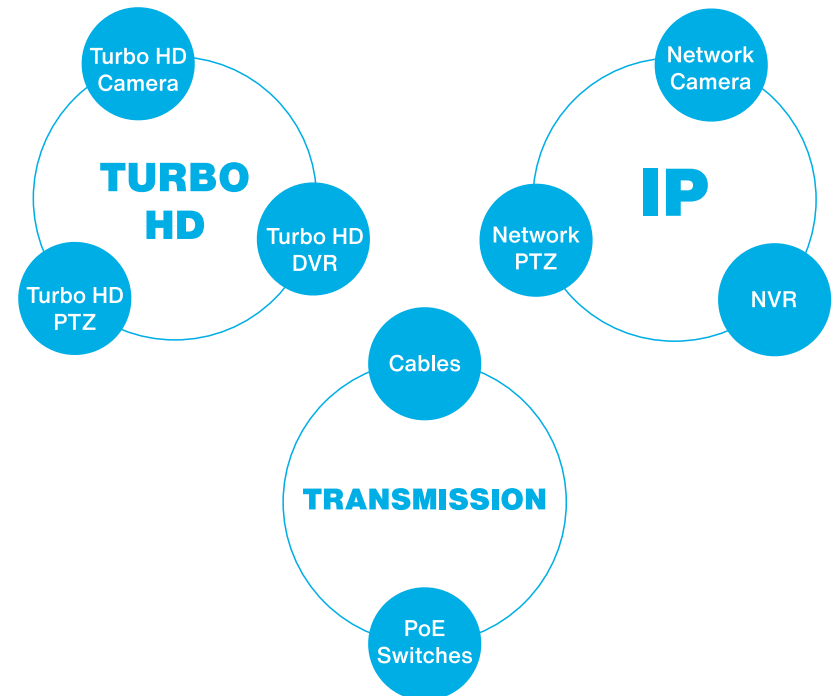
**IP Solution:** Network Cameras, Network PTZ Cameras, NVRs

**Turbo HD Solution:**

Turbo HD Cameras, Turbo HD PTZ Cameras, Turbo HD DVRs

**Transmission:** Switches, Coaxial Cables, Network Cables

Expect even more product lines under the HiLook brand in the near future.



# OUTSTANDING PRODUCT QUALITY

The superior cost-efficiency of HiLook products does not imply any compromise in product quality, which are guaranteed by:

- Over 80% automated manufacturing
- Options for more durable materials such as full metal
- Comprehensive authoritative certifications of the industry
- Stringent tests for ingress protection, vandal resistance, aging, etc.

# SAFE AND SOUND

## Ever So Clear

Cameras with resolutions up to 5 MP capture rich details with wider coverage, providing strong evidence for post-event search.



Prolonged HD recordings enabled by the H.265+ smart codec provides more details to find the right evidence users might have forgotten.

Recorded file size for the same amount of time

100%



H.264

50%



H.265

25%



H.265+

Note: this test result is for reference only.



## Ever So Bright

The ColorVu technology ensures 24/7 colorful imaging even in dim light conditions, providing a safer night environment for everyone – and available at affordable prices.

Note: refer to page 23 and page 35 for product specifications.

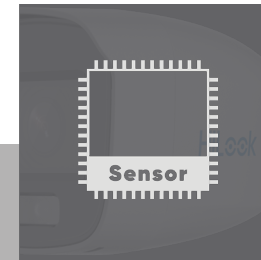


Combining Great Technologies  
for Greater Image Quality



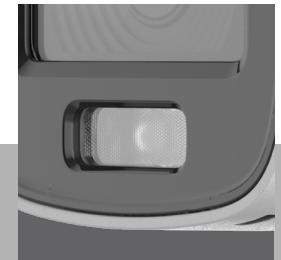
### F1.0 Super Aperture

Collects more light to produce brighter image.



### Advanced Sensor

Vastly improves the utilization of available light.



### Friendly Lighting

Soft and warm supplemental light works to guarantee colorful images when in zero-light environments.

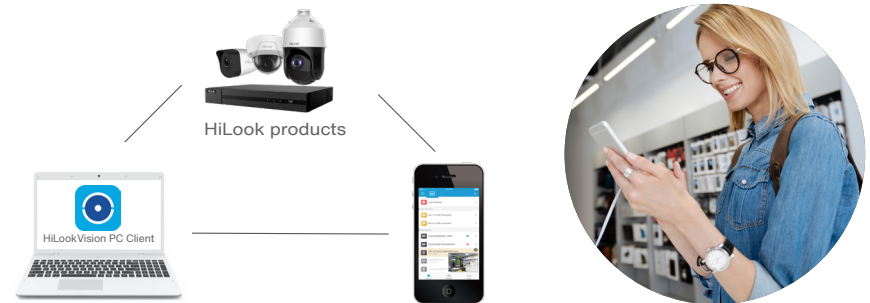
## Ever So Evident

Integrating audio into CCTV security system is a groundbreaking advancement, providing users with more situational awareness and more evidence after an event. Combining audio and video enhances security and will be universal for the video security industry in the future.



## SEE WHO'S THERE, WHEREVER AND WHENEVER

The HiLookVision app allows live viewing from anywhere and at any time via smart phones, and sends timely notifications and alarms to end-users when events occur.



Users can also stream the live feed using the HiLookVision PC Client or monitors connected to a DVR or NVR for more details and better viewing experience.

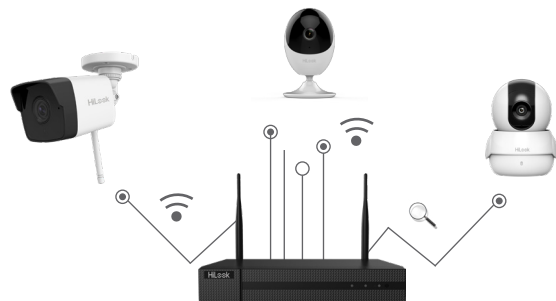


With select NVR models that allow separate video channel output to more than one monitors, you can monitor multiple channels simultaneously and more conveniently.



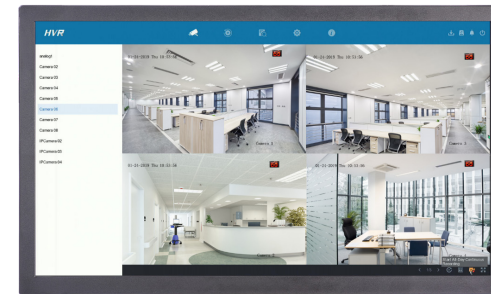
## CLICK AND CONNECT

With HiLook, a professional video security system can be easy. Users can choose and install Wi-Fi products by themselves. The Wi-Fi match function allows automatic connection between cameras and the NVR.



For users preferring non-Wi-Fi products, plug-and-play systems are also available either with PoE models or analog products. Automatic connection is supported by all HiLook products, non-PoE models included.

As a compact solution for the SSMB market, HiLook offers the simplest solutions for security management.



- Simple and concise design with only five necessary models on the dashboard header, making it easier for users to view live, search, and set alarm schedules when needed.

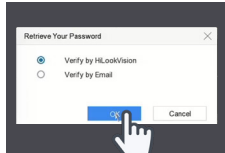
E-UI: Efficient User Interface for HiLook NVRs and DVRs

### Forgot a Password? Just Scan and Reset


Users can reset their NVR or DVR password using the HiLookVision app with a registered account that is bound with their device account. Resetting a password via email is also supported. Both methods are simple and safe.



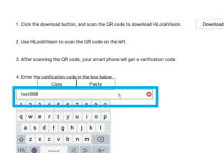
**01**  
Choose "Verify with HiLookVision"



**02**  
Scan the QR code on the GUI and get a verification code



**03**  
Key in the verification code and reset password



Tips: The HiLookVision account needs to be bound with devices in advance, so we highly recommend binding the device to your HiLookVision app account during activation.

# PRODUCT SHOWCASE

---

IP SOLUTION

TURBO HD SOLUTION

TRANSMISSION PRODUCTS

ACCESSORIES



## IP SOLUTION

HiLook IP cameras render up to 5 MP, super-HD imaging with an optimized bandwidth via its highly efficient H.265+ video compression. The Wi-Fi models feature flexible, nearly-effortless installation and quick connection for instant view. With no difficult IP setup and only one cable for power and data, the PoE feature connects cameras and NVRs quickly and easily. And the NVRs ensure smooth live view and fluid playback through reliable video recording and management. HiLook is perfect for small business security.





**IPC-B150H**  
5 MP Fixed-lens  
Bullet

- Up to 5 MP high resolution
- 2.8 or 4 mm fixed lens
- Supports H.265+/H.265, H.264+/H.264
- IR Range: Up to 30 m
- IP67, 120 dB WDR
- Supports PoE
- Front Cover: Metal
- Back Cover & Bracket: Plastic



**IPC-D150H**  
5 MP Fixed-lens  
Dome

- Up to 5 MP high resolution
- 2.8 or 4 mm fixed lens
- Supports H.265+/H.265, H.264+/H.264
- IR Range: Up to 30 m
- IP67, IK10, 120 dB WDR
- Supports PoE
- Base: Metal, Cover: Plastic



**IPC-B149H**  
4 MP Fixed-lens  
ColorVu Bullet

NEW

- Up to 4 MP high resolution
- 2.8 or 4 mm fixed lens
- Supports H.265+/H.265, H.264+/H.264
- White Light Range: Up to 30 m
- IP67, 120 dB WDR
- Supports PoE
- Front Cover: Metal
- Back Cover & Bracket: Metal



**IPC-T249H**  
4 MP Fixed-lens  
ColorVu Turret

NEW

- Up to 4 MP high resolution
- 2.8 or 4 mm fixed lens
- Supports H.265+/H.265, H.264+/H.264
- White Light Range: Up to 30 m
- IP67, 120 dB WDR
- Supports PoE
- Camera Body: Metal, Bottom Base: Plastic



**IPC-T250H**  
5 MP Fixed-lens  
Turret

- Up to 5 MP high resolution
- 2.8 or 4 mm fixed lens
- Supports H.265+/H.265, H.264+/H.264
- IR Range: Up to 30 m
- IP67, 120 dB WDR
- Supports PoE
- Camera Body: Metal, Bottom Base: Plastic



**IPC-B650H-Z**  
5 MP Varifocal  
Bullet

- Up to 5 MP high resolution
- 2.8 to 12 mm varifocal lens
- Supports H.265/H.265+, H.264/H.264+
- IP67, 120 dB WDR
- IR Range: Up to 30 m
- Supports PoE & TF card slot
- -Z: motorized varifocal lens



**IPC-B140H**  
4 MP Fixed-lens  
Bullet

HOT

- Up to 4 MP high resolution
- 2.8 or 4 mm fixed lens
- Supports H.265+/H.265, H.264+/H.264
- IR Range: Up to 30 m
- IP67, 120 dB WDR
- Supports PoE
- Front Cover: Metal
- Back Cover & Bracket: Plastic



**IPC-D140H**  
4 MP Fixed-lens  
Dome

HOT

- Up to 4 MP high resolution
- 2.8 or 4 mm fixed lens
- Supports H.265/H.265+, H.264/H.264+
- IR Range: Up to 30 m
- IP67, IK10, 120 dB WDR
- Supports PoE
- Base: Metal, Cover: Plastic



**IPC-D650H-Z**  
5 MP Varifocal  
Dome

- Up to 5 MP high resolution
- 2.8 to 12 mm varifocal lens
- Supports H.265/H.265+, H.264/H.264+
- IP67, IK10, 120 dB WDR
- IR Range: Up to 30 m
- Supports PoE & TF card slot
- -Z: motorized varifocal lens



**IPC-T651H-Z**  
5 MP Varifocal  
Turret

- Up to 5 MP high resolution
- 2.8 to 12 mm varifocal lens
- Supports H.265+/H.265, H.264+/H.264
- IP67, 120 dB WDR
- IR Range: Up to 30 m
- Supports PoE & TF card slot
- Motorized varifocal lens
- Camera Body: Metal, Bottom Base: Plastic



**IPC-T240H**  
4 MP Fixed-lens  
Turret

HOT

- Up to 4 MP high resolution
- 2.8 or 4 mm fixed lens
- Supports H.265/H.265+, H.264/H.264+
- IR Range: Up to 30 m
- IP67, 120 dB WDR
- Supports PoE
- Camera Body: Metal, Bottom Base: Plastic



**IPC-B640H-Z**  
4 MP Varifocal  
Bullet

HOT

- Up to 4 MP high resolution
- 2.8 to 12 mm varifocal lens
- Supports H.265+/H.265, H.264+/H.264
- IP67, 120 dB WDR
- IR Range: Up to 30 m
- Supports PoE & TF card slot
- -Z: motorized varifocal lens



**IPC-D640H-Z**  
4 MP Varifocal  
Dome

HOT

- Up to 4 MP high resolution
- 2.8 to 12 mm varifocal lens
- Supports H.265/H.265+, H.264/H.264+
- IP67, IK10, 120 dB WDR
- IR Range: Up to 30 m
- Supports PoE & TF card slot
- -Z: motorized varifocal lens



**IPC-T641H-Z**  
4 MP Varifocal  
Turret

- Up to 4 MP high resolution
- 2.8 to 12 mm varifocal lens
- Supports H.265+/H.265, H.264+/H.264
- IP67, 120 dB WDR
- IR Range: Up to 30 m
- Supports PoE & TF card slot
- Motorized varifocal lens
- Camera Body: Metal, Bottom Base: Plastic



**IPC-T221H**  
2 MP Fixed-lens  
Turret

- Up to 2 MP high resolution
- 2.8 or 4 mm fixed lens
- Supports H.265+/H.265, H.264+/H.264
- IR Range: Up to 30 m
- IP67, DWDR
- Supports PoE
- Camera Body: Metal, Bottom Base: Plastic



**IPC-B620H-V/Z**  
2 MP Varifocal  
Bullet

- Up to 2 MP high resolution
- 2.8 to 12 mm varifocal lens
- Supports H.265+/H.265, H.264+/H.264
- IP67, DWDR
- IR Range: Up to 30 m
- Supports PoE & TF card slot
- -Z: motorized varifocal lens



**IPC-B129H**  
2 MP Fixed-lens  
ColorVu Bullet

NEW

- Up to 2 MP high resolution
- 2.8 or 4 mm fixed lens
- Supports H.265+/H.265, H.264+/H.264
- White Light Range: Up to 30 m
- IP67, DWDR
- Supports PoE
- Front Cover: Metal
- Back Cover & Bracket: Metal



**IPC-T229H**  
2 MP Fixed-lens  
ColorVu Turret

NEW

- Up to 2 MP high resolution
- 2.8 or 4 mm fixed lens
- Supports H.265+/H.265, H.264+/H.264
- White Light Range: Up to 30 m
- IP67, DWDR
- Supports PoE
- Camera Body: Metal, Bottom Base: Plastic



**IPC-D620H-V/Z**  
2 MP Varifocal  
Dome

- Up to 2 MP high resolution
- 2.8 to 12 mm varifocal lens
- Supports H.265/H.265+, H.264/H.264+
- IP67, IK10, DWDR
- IR Range: Up to 30 m
- Supports PoE & TF card slot
- -Z: motorized varifocal lens



**IPC-T621H-Z**  
2 MP Varifocal  
Turret

- Up to 2 MP high resolution
- 2.8 to 12 mm varifocal lens
- Supports H.265+/H.265, H.264+/H.264
- IP67, DWDR
- IR Range: Up to 30 m
- Supports PoE & TF card slot
- Motorized varifocal lens
- Camera Body: Metal, Bottom Base: Plastic



**IPC-B121H**  
2 MP Fixed-lens  
Bullet

- Up to 2 MP high resolution
- 2.8 or 4 mm fixed lens
- Supports H.265+/H.265, H.264+/H.264
- IR Range: Up to 30 m
- IP67, DWDR
- Supports PoE
- Front Cover: Metal
- Back Cover & Bracket: Plastic



**IPC-D121H**  
2 MP Fixed-lens  
Dome

HOT

- Up to 2 MP high resolution
- 2.8 or 4 mm fixed lens
- Supports H.265+/H.265, H.264+/H.264
- IR Range: Up to 30 m
- IP67, IK10, DWDR
- Supports PoE
- Base: Metal, Cover: Plastic



**IPC-C120-D/W**  
2 MP Fixed-lens  
Wi-Fi Cube

HOT

- Up to 2 MP high resolution
- 2.0 mm fixed lens
- Supports H.265+/H.265, H.264+/H.264
- IR Range: Up to 10 m
- DWDR
- Built-in microphone and speaker, supporting two-way audio
- Built-in Wi-Fi
- Camera Body: Plastic, Bottom Base: Plastic



**IPC-P120-D/W**  
2 MP Fixed-lens  
Wi-Fi Mini PT

HOT

- Up to 2 MP high resolution
- 2.0 mm fixed lens
- Supports H.265+/H.265, H.264+/H.264
- IR Range: Up to 10 m
- DWDR
- Built-in microphone and speaker, supporting two-way audio
- Built-in Wi-Fi
- Camera Body: Plastic, Bottom Base: Plastic



**PTZ-P332ZI-DE3**  
PanoVu Mini  
IR PTZ

- 3 × 2 MP panoramic images, PTZ: 4× optical zoom  
Color: 0.05 lux @ F2.0  
B/W: 0.01 lux @ F2.0"
- Supports H.265
- DWDR
- IR: Up to 10 m
- 12 VDC & PoE+



**PTZ-N4225I-DE**  
4-inch 2 MP  
IR PTZ

- Up to 2 MP high definition, 25x optical zoom  
Color: 0.005 lux @ F1.6,  
B/W: 0.001 lux @ F1.6"
- Supports H.265+/H.265
- IP66, 120 dB WDR
- IR: 100 m
- 12 VDC & PoE+



**PTZ-N4215I-DE**  
4-inch 2 MP  
IR PTZ

- Up to 2 MP high definition, 15x optical zoom  
Color: 0.005 lux @ F1.6,  
B/W: 0.001 lux @ F1.6"
- Supports H.265+/H.265
- IP66, 120 dB WDR
- IR: 100 m
- 12 VDC & PoE+



**PTZ-N4215-DE3**  
4-inch 2 MP  
Non-IR PTZ

- Up to 2 MP high definition, 15x optical zoom  
Color: 0.005 lux @ F1.6,  
B/W: 0.001 lux @ F1.6"
- Supports H.265+/H.265
- 120 dB WDR
- 12 VDC & PoE+



**PTZ-N2404I-DE3**  
2-inch 4 MP  
IR PTZ

- Up to 4 MP high definition, 4x optical zoom  
Color: 0.005 lux @ F1.6  
B/W: 0.001 lux @ F1.6"
- Supports H.265+/H.265
- IP66, IK10, 120 dB WDR
- IR: Up to 20 m
- 12 VDC & PoE



**PTZ-N2204I-DE3**  
2-inch 2 MP  
IR PTZ

- Up to 4 MP high definition, 4x optical zoom  
Color: 0.005 lux @ F1.6,  
B/W: 0.001 lux @ F1.6"
- Supports H.265+/H.265
- IP66, IK10, 120 dB WDR
- IR: Up to 20 m
- 12 VDC & PoE



**NVR-216MH-C/16P**  
16-ch 2-HDD  
PoE NVR

- 160 Mbps input max.; up to 16 ch. of IP camera input
- 1-ch 8 MP / 5-ch 1080p decoding capacity
- Supports H.265/H.265+, H.264/H.264+
- 2 SATA interfacess, up to 8 TB
- Supports 16 PoE interfaces
- 380 1U case (Metal)



**NVR-216MH-C**  
16-ch 2-HDD  
Non-PoE NVR

- 160 Mbps input max.; up to 16 ch. of IP camera input
- 1-ch 8 MP / 5-ch 1080p decoding capacity
- Supports H.265/H.265+, H.264/H.264+
- 2 SATA interfacess, up to 8 TB
- 380 1U case (Metal)



**NVR-208MH-C/8P**  
8-ch 2-HDD  
PoE NVR

- 80 Mbps input max.; up to 8 ch. of IP camera input
- 1-ch 8 MP / 5-ch 1080p decoding capacity
- Supports H.265/H.265+, H.264/H.264+
- 2 SATA interfacess, up to 8 TB
- Supports 8 PoE interfaces
- 380 1U case (Metal)



**NVR-208MH-C**  
8-ch 2-HDD  
Non-PoE NVR

- 80 Mbps input max.; up to 8 ch. of IP camera input
- 1-ch 8 MP / 5-ch 1080p decoding capacity
- Supports H.265/H.265+, H.264/H.264+
- 2 SATA interfacess, up to 8 TB
- 380 1U case (Metal)



**NVR-116MH-C**  
16-ch 1-HDD  
Non-PoE NVR

- 160 Mbps input max.; up to 16 ch. of IP camera input
- 1-ch 8 MP / 5-ch 1080p decoding capacity
- Supports H.265/H.265+, H.264/H.264+
- 1 SATA interface, up to 8 TB
- 260 1U case (Metal)



**NVR-108MH-C/8P**  
8-ch 1-HDD  
PoE NVR

HOT

- 80 Mbps input max.; up to 8 ch. of IP camera input
- 1-ch 8 MP / 5-ch 1080p decoding capacity
- Supports H.265/H.265+, H.264/H.264+
- 1 SATA interface, up to 8 TB
- Supports 8 PoE interfaces
- 260 1U case (Metal)



**NVR-108MH-C**  
8-ch 1-HDD  
Non-PoE NVR

HOT

- 80 Mbps input max.; up to 8 ch. of IP camera input
- 1-ch 8 MP / 5-ch 1080p decoding capacity
- Supports H.265/H.265+, H.264/H.264+
- 1 SATA interface, up to 8 TB
- 260 1U case (Metal)



**NVR-104MH-D/4P**  
4-ch 1-HDD  
PoE NVR

HOT

- 40Mbps input max.; up to 4 ch. IP camera input
- 1-ch @ 6 MP / 4-ch @ 1080p decoding capacity
- Supports H.265/H.265+, H.264/H.264+
- 1 SATA interface, up to 6 TB
- Supports 4 PoE interfaces
- 260 1U case (Metal)



**NVR-104MH-D**  
4-ch 1-HDD  
Non-PoE NVR

- 40 Mbps input max.; up to 4 ch. of IP camera input
- 1-ch @ 6 MP / 4-ch @ 1080p decoding capacity
- Supports H.265/H.265+, H.264/H.264+
- 1 SATA interface, up to 6 TB
- 260 1U case (Metal)



**NVR-104MH-C/4P**  
4-ch 1-HDD  
PoE NVR

HOT

- 40 Mbps input max.; up to 4 ch. of IP camera input
- 1-ch 8 MP / 5-ch 1080p decoding capacity
- Supports H.265/H.265+, H.264/H.264+
- 1 SATA interface, up to 8 TB
- Supports 4 PoE interfaces
- 260 1U case (Metal)



**NVR-104MH-C**  
4-ch 1-HDD  
Non-PoE NVR

HOT

- 40 Mbps input max.; up to 4 ch. of IP camera input
- 1-ch 8 MP / 5-ch 1080p decoding capacity
- Supports H.265/H.265+, H.264/H.264+
- 1 SATA interface, up to 8 TB
- 260 1U case (Metal)



**NVR-108H-D/8P**  
8-ch 1-HDD  
PoE NVR

- 60 Mbps input max.; up to 8 ch. of IP camera input
- 1-ch @ 6 MP / 4-ch @ 1080p decoding capacity
- Supports H.265/H.265+, H.264/H.264+
- 1 SATA interface, up to 6 TB
- Supports 8 PoE interfaces
- Mini 1U Case (Plastic)



**NVR-108H-D**  
8-ch 1-HDD  
Non-PoE NVR

- 60 Mbps input max.; up to 8 ch. of IP camera input
- 1-ch @ 6 MP / 4-ch @ 1080p decoding capacity
- Supports H.265/H.265+, H.264/H.264+
- 1 SATA interface, up to 6 TB
- Mini 1U Case (Plastic)



**NVR-108MH-D/8P**  
8-ch 1-HDD  
PoE NVR

- 60 Mbps input max.; up to 8 ch. of IP camera input
- 1-ch @ 6 MP / 4-ch @ 1080p decoding capacity
- Supports H.265/H.265+, H.264/H.264+
- 1 SATA interface, up to 6 TB
- Supports 8 PoE interfaces
- 260 1U case (Metal)



**NVR-108MH-D**  
8-ch 1-HDD  
Non-PoE NVR

- 60 Mbps input max.; up to 8 ch. of IP camera input
- 1-ch @ 6 MP / 4-ch @ 1080p decoding capacity
- Supports H.265/H.265+, H.264/H.264+
- 1 SATA interface, up to 6 TB
- 260 1U case (Metal)



**NVR-104H-D/4P**  
4-ch 1-HDD  
PoE NVR

- 40 Mbps input max.; up to 4 ch. of IP camera input
- 1-ch @ 6 MP / 4-ch @ 1080p decoding capacity
- Supports H.265/H.265+, H.264/H.264+
- 1 SATA interface, up to 6 TB
- Supports 4 PoE interfaces
- Mini 1U Case (Plastic)



**NVR-104H-D**  
4-ch 1-HDD  
Non-PoE NVR

- 40 Mbps input max.; up to 4 ch. of IP camera input
- 1-ch @ 6 MP / 4-ch @ 1080p decoding capacity
- Supports H.265/H.265+, H.264/H.264+
- 1 SATA interface, up to 6 TB
- Mini 1U Case (Plastic)



**NVR-104MH-D/W**  
4-ch 1-HDD Wi-Fi  
Video Recorder

- 50 Mbps input max.; up to 4 ch. of IP camera input
- 1-ch @ 4 MP / 4-ch @ 1080p decoding capacity
- Supports H.265/H.265+, H.264/H.264+
- 1 SATA interface, up to 6 TB
- 260 1U case (Metal)
- Wi-Fi Antenna Structure: 2\*MIMO
- Wi-Fi Transmission Distance: 80 m



**NVR-108MH-D/W**  
8-ch 1-HDD Wi-Fi  
Video Recorder

- 50 Mbps input max.; up to 8 ch. of IP camera input
- 1-ch @ 4 MP / 4-ch @ 1080p decoding capacity
- Supports H.265/H.265+, H.264/H.264+
- 1 SATA interface, up to 6 TB
- 260 1U case (Metal)
- Wi-Fi Antenna Structure: 2\*MIMO
- Wi-Fi Transmission Distance: 80 m



**IK-4042TH-MH/P** 2 MP Turret PoE Kit

- NVR: 4-ch Network Video Recorder
- IPC: 4 \* 2 MP Fixed-lens Turret
- Cable: Four 18-meter Cat 5e network cables, one 2-meter Cat 5e network cable, one 2-meter HDMI cable
- Supports 4 PoE interfaces
- Supports H.265/H.264



**IK-4042BH-MH/P** 2 MP Bullet PoE Kit

- NVR: 4-ch Network Video Recorder
- IPC: 4 \* 2 MP Fixed-lens Bullet
- Cable: Four 18-meter Cat 5e network cables, one 2-meter Cat 5e network cable, one 2-meter HDMI cable
- Supports 4 PoE interfaces
- Supports H.265/H.264



**IK-4142TH-MH/P** 2 MP Turret PoE Kit

- NVR: 4-ch 1-HDD Network Video Recorder
- IPC: 4 \* 2 MP Fixed-lens Turret
- Cable: Four 18-meter Cat 5e network cables, one 2-meter Cat 5e network cable, one 2-meter HDMI cable
- HDD: 1 TB
- Supports 4 PoE interfaces
- Supports H.265/H.264



**IK-4142BH-MH/P** 2 MP Bullet PoE Kit

- NVR: 4-ch 1-HDD Network Video Recorder
- IPC: 4 \* 2 MP Fixed-lens Bullet
- Cable: Four 18-meter Cat 5e network cable, one 2-meter Cat 5e network cable, one 2-meter HDMI cable
- HDD: 1 TB
- Supports 4 PoE interfaces
- Supports H.265/H.264



**IK-4142B-MH/W(B)** 2 MP Bullet Wi-Fi Kit

- NVR: 4-ch 1-HDD Wi-Fi Video Recorder
- IPC: 4 \* 2 MP IR Fixed Bullet Wi-Fi Camera
- Cable: One 1-meter Cat 5e network cable, one 2-meter HDMI cable
- HDD: 1 TB
- Supports H.265/H.264
- Wi-Fi Antenna Structure: 2\*MIMO
- Wi-Fi Transmission Distance: 80 m

# TURBO HD SOLUTION



HiLook's Turbo HD cameras feature plug-and-play capabilities using coaxial cables and render superior imaging in as little light as 0.005 lux. The PIR detection with strobe light and siren, and compatibility with other brands take this solution far beyond its competitors. HiLook Turbo HD DVRs also feature an easy-to-use UI, giving security personnel powerful camera management and recording with excellent compression technology.



**THC-B240-M**  
4 MP Fixed-lens  
Bullet

- 4 MP CMOS Sensor
- 2.8, 3.6 or 6 mm lens
- 40 m IR, ICR, 0.01 lux @ F1.2
- 12 VDC, Smart IR, DWDR, DNR, OSD Menu
- IP66
- Supports HD-TVI / AHD / CVI / CVBS video output
- Material: Metal



**THC-B240**  
4 MP Fixed-lens  
Bullet

- 4 MP CMOS Sensor
- 2.8, 3.6 or 6 mm lens
- 40 m IR, ICR, 0.01 lux @ F1.2
- 12 VDC, Smart IR, DWDR, DNR, OSD Menu
- IP66
- Supports HD-TVI / AHD / CVI / CVBS video output
- Material: Metal & Plastic



**THC-B140-M**  
4 MP Fixed-lens  
Mini Bullet

- 4 MP CMOS Sensor
- 2.8, 3.6 or 6 mm lens
- 20 m IR, ICR, 0.01 lux @ F1.2
- 12 VDC, Smart IR, DWDR, DNR, OSD Menu
- IP66
- Supports HD-TVI / AHD / CVI / CVBS video output
- Material: Metal



**THC-B140-P**  
4 MP Fixed-lens  
Mini Bullet

- 4 MP CMOS Sensor
- 2.8, 3.6 or 6 mm lens
- 20 m IR, ICR, 0.01 lux @ F1.2
- 12 VDC, Smart IR, DWDR, DNR, OSD Menu
- IP66
- Supports HD-TVI / AHD / CVI / CVBS video output
- Material: Plastic



**THC-D340-VF**  
4 MP Varifocal  
Dome

- 4 MP CMOS Sensor
- 2.8 to 12 mm varifocal lens
- 40 m IR, ICR, 0.01 lux @ F1.2
- 12 VDC, Smart IR, DWDR, DNR, OSD Menu
- IP66, IK10
- Supports HD-TVI / AHD / CVI / CVBS video output
- Material: Metal



**THC-T140-M**  
4 MP Fixed-lens  
Mini Turret

- 4 MP CMOS Sensor
- 2.8, 3.6 or 6 mm lens
- 20 m IR, ICR, 0.01 lux @ F1.2
- 12 VDC, Smart IR, DWDR, DNR, OSD Menu
- IP66
- Supports HD-TVI / AHD / CVI / CVBS video output
- Material: Metal



**THC-T140**  
4 MP Fixed-lens  
Mini Turret

- 4 MP CMOS Sensor
- 2.8, 3.6 or 6 mm lens
- 20 m IR, ICR, 0.01 lux @ F1.2
- 12 VDC, Smart IR, DWDR, DNR, OSD Menu
- IP66
- Supports HD-TVI / AHD / CVI / CVBS video output
- Material: Metal & Plastic



**THC-T140-P**  
4 MP Fixed-lens  
Mini Turret

- 4 MP CMOS Sensor
- 2.8, 3.6 or 6 mm lens
- 20 m IR, ICR, 0.01 lux @ F1.2
- 12 VDC, Smart IR, DWDR, DNR, OSD Menu
- Supports HD-TVI / AHD / CVI / CVBS video output
- Material: Plastic



**THC-B229-M**  
2 MP Fixed-lens  
ColorVu Bullet

- 2 MP CMOS Sensor
- 2.8 , 3.6 or 6 mm fixed focal lens
- 40 m white light distance, 0.001 Lux @ F1.0
- 12 VDC, Smart Light, DWDR, OSD Menu, 3D DNR
- IP66
- Supports HD-TVI / AHD / CVI / CVBS video output
- Material: Metal



**THC-B129-M**  
2 MP Fixed-lens  
ColorVu Mini Bullet

- 2 MP CMOS Sensor
- 2.8 , 3.6 or 6 mm fixed focal lens
- 20 m white light distance, 0.001 Lux @ F1.0
- 12 VDC, Smart Light, DWDR, OSD Menu, 3D DNR
- IP66
- Supports HD-TVI / AHD / CVI / CVBS video output
- Material: Metal



**THC-T240-M**  
4 MP Fixed-lens  
Turret

- 4 MP CMOS Sensor
- 2.8, 3.6 or 6 mm lens
- 40 m IR, ICR, 0.01 lux @ F1.2
- 12 VDC, Smart IR, DWDR, DNR, OSD Menu
- IP66
- Supports HD-TVI / AHD / CVI / CVBS video output
- Material: Metal



**THC-T240-P**  
4 MP Fixed-lens  
Turret

- 4 MP CMOS Sensor
- 2.8, 3.6 or 6 mm lens
- 40 m IR, ICR, 0.01 lux @ F1.2
- 12 VDC, Smart IR, DWDR, DNR, OSD Menu
- IP66
- Supports HD-TVI / AHD / CVI / CVBS video output
- Material: Plastic



**THC-B129-P**  
2 MP Fixed-lens  
ColorVu Mini Bullet

- 2 MP CMOS Sensor
- 2.8 , 3.6 or 6 mm fixed focal lens
- 20 m white light distance, 0.001 Lux @ F1.0
- 12 VDC, Smart Light, DWDR, OSD Menu, 3D DNR
- IP66
- Supports HD-TVI / AHD / CVI / CVBS video output
- Material: Plastic



**THC-T229-M**  
2 MP Fixed-lens  
ColorVu Turret

- 2 MP CMOS Sensor
- 2.8 , 3.6 or 6 mm fixed focal lens
- 40 m white light distance, 0.001 Lux @ F1.0
- 12 VDC, Smart Light, DWDR, OSD Menu, 3D DNR
- IP66
- Supports HD-TVI / AHD / CVI / CVBS video output
- Material: Metal



**THC-B340-VF**  
4 MP Varifocal  
Bullet

- 4 MP CMOS Sensor
- 2.8 to 12 mm varifocal lens
- 40 m IR, ICR, 0.01 lux @ F1.2
- 12 VDC, Smart IR, DWDR, DNR, OSD Menu
- IP66
- Supports HD-TVI / AHD / CVI / CVBS video output
- Material: Metal & Plastic



**THC-T340-VF**  
4 MP Varifocal  
Turret

- 4 MP CMOS Sensor
- 2.8 to 12 mm varifocal lens
- 40 m IR, ICR, 0.01 lux @ F1.2,
- 12 VDC, Smart IR, DWDR, DNR, OSD Menu,
- IP66
- Supports HD-TVI / AHD / CVI / CVBS video output
- Material: Metal & Plastic



**THC-T129-M**  
2 MP Fixed-lens  
ColorVu Mini Turret

- 2 MP CMOS Sensor
- 2.8 , 3.6 or 6 mm fixed focal lens
- 20 m white light distance, 0.001 Lux @ F1.0
- 12 VDC, Smart Light, DWDR, OSD Menu, 3D DNR
- IP66
- Supports HD-TVI / AHD / CVI / CVBS video output
- Material: Metal



**THC-T129-P**  
2 MP Fixed-lens  
ColorVu Mini Turret

- 2 MP CMOS Sensor
- 2.8 mm, 3.6 mm, 6 mm fixed focal lens
- 20 m white light distance, 0.001 Lux @ F1.0
- 12 VDC, Smart Light, DWDR, OSD Menu, 3D DNR
- Supports HD-TVI / AHD / CVI / CVBS video output
- Material: Plastic



**THC-B223-M**  
2 MP Fixed-lens  
Bullet

- 2 MP CMOS Sensor
- 2.8, 3.6 or 6 mm lens
- 50 m IR, ICR, 0.005 lux @ F1.2
- 12 VDC, Smart IR, True WDR, 3D DNR, OSD Menu
- IP66
- Supports HD-TVI / AHD / CVI / CVBS video output
- Material: Metal



**THC-B223**  
2 MP Fixed-lens  
Bullet

- 2 MP CMOS Sensor
- 2.8, 3.6 or 6 mm lens
- 50 m IR, ICR, 0.005 lux @ F1.2
- 12 VDC, Smart IR, True WDR, 3D DNR, OSD Menu
- IP66
- Supports HD-TVI / AHD / CVI / CVBS video output
- Material: Metal & Plastic



**THC-T123-P**  
2 MP Fixed-lens  
Mini Turret

- 2 MP CMOS Sensor
- 2.8, 3.6 or 6 mm lens
- 30 m IR, ICR, 0.005 lux @ F1.2
- 12 VDC, Smart IR, True WDR, 3D DNR, OSD
- Supports HD-TVI / AHD / CVI / CVBS video output
- Material: Plastic



**THC-T223-M**  
2 MP Fixed-lens  
Turret

- 2 MP CMOS Sensor
- 2.8, 3.6 or 6 mm lens
- 50 m IR, ICR, 0.005 lux @ F1.2
- 12 VDC, Smart IR, True WDR, 3D DNR, OSD Menu
- IP66
- Supports HD-TVI / AHD / CVI / CVBS video output
- Material: Metal



**THC-B123-M**  
2 MP Fixed-lens  
Mini Bullet

- 2 MP CMOS Sensor
- 2.8, 3.6 or 6 mm lens
- 30 m IR, ICR, 0.005 lux @ F1.2
- 12 VDC, Smart IR, True WDR, 3D DNR, OSD Menu
- IP66
- Supports HD-TVI / AHD / CVI / CVBS video output
- Material: Metal



**THC-B123-P**  
2 MP Fixed-lens  
Mini Bullet

- 2 MP CMOS Sensor
- 2.8, 3.6 or 6 mm lens
- 30 m IR, ICR, 0.005 lux @ F1.2
- 12 VDC, Smart IR, True WDR, 3D DNR, OSD Menu
- IP66
- Supports HD-TVI / AHD / CVI / CVBS video output
- Material: Plastic



**THC-T223-P**  
2 MP Fixed-lens  
Turret

- 2 MP CMOS Sensor
- 2.8, 3.6 or 6 mm lens
- 50 m IR, ICR, 0.005 lux @ F1.2
- 12 VDC, Smart IR, True WDR, 3D DNR, OSD Menu
- IP66
- Supports HD-TVI / AHD / CVI / CVBS video output
- Material: Plastic



**THC-B323-Z**  
2 MP Varifocal  
Bullet

- 2 MP CMOS Sensor
- 2.7 to 13.5 mm varifocal lens
- 70 m IR, ICR, 0.005 lux @ F1.2
- 12 VDC, Smart IR, True WDR, 3D DNR, OSD Menu, Auto Focus
- IP66
- Supports HD-TVI / AHD / CVI / CVBS video output
- Material: Metal



**THC-T123-M**  
2 MP Fixed-lens  
Mini Turret

- 2 MP CMOS Sensor
- 2.8, 3.6 or 6 mm lens
- 50 m IR, ICR, 0.005 lux @ F1.2
- 12 VDC, Smart IR, True WDR, 3D DNR, OSD Menu
- IP66
- Supports HD-TVI / AHD / CVI / CVBS video output
- Material: Metal



**THC-T123**  
2 MP Fixed-lens  
Mini Turret

- 2 MP CMOS Sensor
- 2.8, 3.6 or 6 mm lens
- 30 m IR, ICR, 0.005 lux @ F1.2
- 12 VDC, Smart IR, True WDR, 3D DNR, OSD Menu
- IP66
- Supports HD-TVI / AHD / CVI / CVBS video output
- Material: Metal & Plastic



**THC-D323-Z**  
2 MP Varifocal  
Dome

- 2 MP CMOS Sensor
- 2.7 to 13.5 mm varifocal lens
- 70 m IR, ICR, 0.005 lux @ F1.2
- 12 VDC, Smart IR, True WDR, 3D DNR, OSD Menu, Auto Focus
- IP66, IK10
- Supports HD-TVI / AHD / CVI / CVBS video output
- Material: Metal



**THC-T323-Z**  
2 MP Varifocal  
Turret

- 2 MP CMOS Sensor
- 2.7 to 13.5 mm varifocal lens
- 70 m IR, ICR, 0.005 lux @ F1.2,
- 12 VDC, Smart IR, True WDR, 3D DNR, OSD Menu, Auto Focus
- IP66
- Supports HD-TVI / AHD / CVI / CVBS video output
- Material: Metal





**THC-B120-MS**  
2 MP Built-in Mic  
Bullet

- 2 MP CMOS Sensor
- 2.8, 3.6 or 6 mm lens
- 30 m IR, ICR, 0.01 lux @ F1.2
- 12 VDC, Smart IR, DWDR, DNR, OSD Menu
- IP66
- Supports HD-TVI / AHD / CVI / CVBS video output
- Audio: Built-in microphone
- Material: Metal



**THC-B120-PS**  
2 MP Built-in Mic  
Bullet

- 2 MP CMOS Sensor
- 2.8, 3.6 or 6 mm lens
- 25 m IR, ICR, 0.01 lux @ F1.2
- 12 VDC, Smart IR, DWDR, DNR, OSD Menu
- IP66
- Supports HD-TVI / AHD / CVI / CVBS video output
- Audio: Built-in microphone
- Material: Plastic



**THC-B220**  
2 MP Fixed-lens  
Bullet

- 2 MP CMOS Sensor
- 2.8, 3.6 or 6 mm lens
- 40 m IR, ICR, 0.01 lux @ F1.2
- 12 VDC, Smart IR, DWDR, DNR, OSD Menu
- IP66
- Supports HD-TVI / AHD / CVI / CVBS video output
- Material: Metal & Plastic



**THC-B120-M**  
2 MP Fixed-lens  
Mini Bullet

- 2 MP CMOS Sensor
- 2.8, 3.6 or 6 mm lens
- 20 m IR, ICR, 0.01 lux @ F1.2
- 12 VDC, Smart IR, DWDR, DNR, OSD Menu
- IP66
- Supports HD-TVI / AHD / CVI / CVBS video output
- Material: Metal



**THC-T220-MS**  
2 MP Built-in Mic  
Turret

- 2 MP CMOS Sensor
- 2.8, 3.6 or 6 mm lens
- 40 m IR, ICR, 0.01 lux @ F1.2
- 12 VDC, Smart IR, DWDR, DNR, OSD Menu
- IP66
- Supports HD-TVI / AHD / CVI / CVBS video output
- Audio: Built-in microphone
- Material: Metal



**THC-T120-MS**  
2 MP Built-in Mic  
Turret

- 2 MP CMOS Sensor
- 2.8, 3.6 or 6 mm lens
- 30 m IR, ICR, 0.01 lux @ F1.2
- 12 VDC, Smart IR, DWDR, DNR, OSD Menu
- IP66
- Supports HD-TVI / AHD / CVI / CVBS video output
- Audio: Built-in microphone
- Material: Metal



**THC-B120-P(B)**  
2 MP Fixed-lens  
Mini Bullet

- 2 MP CMOS Sensor
- 2.8, 3.6 or 6 mm lens
- 20 m IR, ICR, 0.01 lux @ F1.2
- 12 VDC, Smart IR, DWDR, DNR, OSD Menu
- IP66
- Supports HD-TVI / AHD / CVI / CVBS video output
- Material: Plastic



**THC-T120-M**  
2 MP Fixed-lens  
Mini Turret

- 2 MP CMOS Sensor
- 2.8, 3.6 or 6 mm lens
- 20 m IR, ICR, 0.01 lux @ F1.2
- 12 VDC, Smart IR, DWDR, DNR, OSD Menu
- IP66
- Supports HD-TVI / AHD / CVI / CVBS video output
- Material: Metal



**THC-T120-PS**  
2 MP Built-in Mic  
Turret

- 2 MP CMOS Sensor
- 2.8, 3.6 or 6 mm lens
- 20 m IR, ICR, 0.01 lux @ F1.2
- 12 VDC, Smart IR, DWDR, DNR, OSD Menu
- Supports HD-TVI / AHD / CVI / CVBS video output
- Audio: Built-in microphone
- Material: Plastic



**THC-B220-M**  
2 MP Fixed-lens  
Bullet

- 2 MP CMOS Sensor
- 2.8, 3.6 or 6 mm lens
- 40 m IR, ICR, 0.01 lux @ F1.2
- 12 VDC, Smart IR, DWDR, DNR, OSD Menu
- IP66
- Supports HD-TVI / AHD / CVI / CVBS video output
- Material: Metal



**THC-T120**  
2 MP Fixed-lens  
Mini Turret

- 2 MP CMOS Sensor
- 2.8, 3.6 or 6 mm lens
- 20 m IR, ICR, 0.01 lux @ F1.2
- 12 VDC, Smart IR, DWDR, DNR, OSD Menu
- IP66
- Supports HD-TVI / AHD / CVI / CVBS video output
- Material: Metal & Plastic



**THC-T120-P**  
2 MP Fixed-lens  
Mini Turret

- 2 MP CMOS Sensor
- 2.8, 3.6 or 6 mm lens
- 20 m IR, ICR, 0.01 lux @ F1.2
- 12 VDC, Smart IR, DWDR, DNR, OSD Menu
- Supports HD-TVI / AHD / CVI / CVBS video output
- Material: Plastic



**THC-T220-M**  
2 MP Fixed-lens  
Turret

- 2 MP CMOS Sensor
- 2.8, 3.6 or 6 mm lens
- 40 m IR, ICR, 0.01 lux @ F1.2
- 12 VDC, Smart IR, DWDR, DNR, OSD Menu
- IP66
- Supports HD-TVI / AHD / CVI / CVBS video output
- Material: Metal



**THC-T220-P**  
2 MP Fixed-lens  
Turret

- 2 MP CMOS Sensor
- 2.8, 3.6 or 6 mm lens
- 40 m IR, ICR, 0.01 lux @ F1.2
- 12 VDC, Smart IR, DWDR, DNR, OSD Menu
- IP66
- Supports HD-TVI / AHD / CVI / CVBS video output
- Material: Plastic



**THC-B210-M**  
1 MP Fixed-lens  
Bullet

- 1 MP CMOS Sensor
- 2.8, 3.6 or 6 mm lens
- 40 m IR, ICR, 0.01 lux @ F1.2
- 12 VDC, Smart IR, DWDR, OSD Menu
- IP66
- Supports HD-TVI / AHD / CVI / CVBS video output
- Material: Metal



**THC-B210**  
1 MP Fixed-lens  
Bullet

- 1 MP CMOS Sensor
- 2.8, 3.6 or 6 mm lens
- 40 m IR, ICR, 0.01 lux @ F1.2
- 12 VDC, Smart IR, DWDR, DNR, OSD Menu
- IP66
- Supports HD-TVI / AHD / CVI / CVBS video output
- Material: Metal & Plastic



**THC-B320-VF**  
2 MP Varifocal  
Bullet

- 2 MP CMOS Sensor
- 2.8 to 12 mm varifocal lens
- 40 m IR, ICR, 0.01 lux @ F1.2
- 12 VDC, Smart IR, DWDR, DNR, OSD Menu
- IP66
- Supports HD-TVI / AHD / CVI / CVBS video output
- Material: Metal & Plastic



**THC-D320-VF**  
2 MP Varifocal  
Dome

- 2 MP CMOS Sensor
- 2.8 to 12 mm varifocal lens
- 40 m IR, ICR, 0.01 lux @ F1.2
- 12 VDC, Smart IR, DWDR, DNR, OSD Menu
- IP66, IK10
- Supports HD-TVI / AHD / CVI / CVBS video output
- Material: Metal



**THC-B110-M**  
1 MP Fixed-lens  
Mini Bullet

- 1 MP CMOS Sensor
- 2.8, 3.6 or 6 mm lens
- 20 m IR, ICR, 0.01 lux @ F1.2
- 12 VDC, Smart IR, DWDR, DNR, OSD Menu
- IP66
- Supports HD-TVI / AHD / CVI / CVBS video output
- Material: Metal



**THC-B110-P(B)**  
1 MP Fixed-lens  
Mini Bullet

- 1 MP CMOS Sensor
- 2.8, 3.6 or 6 mm lens
- 20 m IR, ICR, 0.01 lux @ F1.2
- 12 VDC, Smart IR, DWDR, DNR, OSD Menu
- IP66
- Supports HD-TVI / AHD / CVI / CVBS video output
- Material: Plastic



**THC-T320-VF**  
2 MP Varifocal  
Turret

- 2 MP CMOS Sensor
- 2.8 to 12 mm varifocal lens
- 40 m IR, ICR, 0.01 lux @ F1.2,
- 12 VDC, Smart IR, DWDR, DNR, OSD Menu,
- IP66
- Supports HD-TVI / AHD / CVI / CVBS video output
- Material: Metal & Plastic



**THC-B120-MPIRL**  
2 MP PIR Bullet

- 2.8 or 3.6 mm lens
- PIR detection, Strobe Light Alarm
- 20 m IR, ICR, 0.01 lux @ F1.2
- 12 VDC, Smart IR, DWDR, OSD Menu
- IP66
- Material: Metal



**THC-T110-M**  
1 MP Fixed-lens  
Mini Turret

- 1 MP CMOS Sensor
- 2.8, 3.6 or 6 mm lens
- 20 m IR, ICR, 0.01 lux @ F1.2
- 12 VDC, Smart IR, DWDR, DNR, OSD Menu
- IP66
- Supports HD-TVI / AHD / CVI / CVBS video output
- Material: Metal



**THC-T110**  
1 MP Fixed-lens  
Mini Turret

- 1 MP CMOS Sensor
- 2.8, 3.6 or 6 mm lens
- 20 m IR, ICR, 0.01 lux @ F1.2
- 12 VDC, Smart IR, DWDR, DNR, OSD Menu
- IP66
- Supports HD-TVI / AHD / CVI / CVBS video output
- Material: Metal & Plastic



**THC-T110-P**  
1 MP Fixed-lens  
Mini Turret

- 1 MP CMOS Sensor
- 2.8, 3.6 or 6 mm lens
- 20 m IR, ICR, 0.01 lux @ F1.2
- 12 VDC, Smart IR, DWDR, DNR, OSD Menu
- Supports HD-TVI / AHD / CVI / CVBS video output
- Material: Plastic



**THC-T210-M**  
1 MP Fixed-lens  
Turret

- 1 MP CMOS Sensor
- 2.8, 3.6 or 6 mm lens
- 40 m IR, ICR, 0.01 lux @ F1.2
- 12 VDC, Smart IR, DWDR, DNR, OSD Menu
- IP66
- Supports HD-TVI / AHD / CVI / CVBS video output
- Material: Metal



**PTZ-T4225I-D**  
4-inch 2 MP  
IR PTZ

- Up to 2 MP high definition, 25x optical zoom
- Color: 0.005 lux @ F1.6, B/W: 0.001 lux @ F1.6
- IP66, 120 dB WDR
- IR: 100 m, 12 VDC
- 8 privacy masks



**PTZ-T4215I-D**  
4-inch 2 MP  
IR PTZ

- Up to 2 MP high definition, 15x optical zoom
- Color: 0.005 lux @ F1.6, B/W: 0.001 lux @ F1.6
- IP66, 120 dB WDR
- IR: 100 m, 12 VDC
- 8 privacy masks



**THC-T210-P**  
1 MP Fixed-lens  
Turret

- 1 MP CMOS Sensor
- 2.8, 3.6 or 6 mm lens
- 40 m IR, ICR, 0.01 lux @ F1.2
- 12 VDC, Smart IR, DWDR, DNR, OSD Menu
- IP66
- Supports HD-TVI / AHD / CVI / CVBS video output
- Material: Plastic



**THC-B310-VF**  
1 MP Varifocal  
Bullet

- 1 MP CMOS Sensor
- 2.8 to 12 mm varifocal lens
- 40 m IR, ICR, 0.01 lux @ F1.2
- 12 VDC, Smart IR, DWDR, DNR, OSD Menu
- IP66
- Supports HD-TVI / AHD / CVI / CVBS video output
- Material: Metal & Plastic



**PTZ-T4215-D3**  
4-inch 2 MP  
Non-IR PTZ

- Up to 2 MP high definition, 15x optical zoom
- Color: 0.005 lux @ F1.6, B/W: 0.001 lux @ F1.6
- 120 dB WDR
- 12 VDC
- 8 privacy masks



**THC-D310-VF**  
1 MP Varifocal  
Dome

- 1 MP CMOS Sensor
- 2.8 to 12 mm varifocal lens
- 40 m IR, ICR, 0.01 lux @ F1.2
- 12 VDC, Smart IR, DWDR, DNR, OSD Menu
- IP66, IK10
- Supports HD-TVI / AHD / CVI / CVBS video output
- Material: Metal



**THC-T310-VF**  
1 MP Varifocal  
Turret

- 1 MP CMOS Sensor
- 2.8 to 12 mm varifocal lens
- 40 m IR, ICR, 0.01 lux @ F1.2
- 12 VDC, Smart IR, DWDR, DNR, OSD Menu
- IP66
- Supports HD-TVI / AHD / CVI / CVBS video output
- Material: Metal & Plastic



5 MP HOT

**DVR-204U-K1**  
4-ch 1-HDD DVR

- 4-ch HD-TVI / AHD / CVI / CVBS video
- 1-ch, RCA (2.0 Vp-p, 1 KΩ)  
4-ch audio via coaxial cable
- Up to 8 channels of IP video input (up to 8 MP resolution)
- H.265 Pro+ / H.265 Pro / H.265 / H.264+ / H.264
- 5 MP @ 12 fps/ch
- 260 1U case



5 MP HOT

**DVR-208U-K1**  
8-ch 1-HDD DVR

- 8-ch HD-TVI / AHD / CVI / CVBS video
- 1-ch, RCA (2.0 Vp-p, 1 KΩ)  
8-ch audio via coaxial cable
- Up to 16 channels of IP video input (up to 8 MP resolution)
- H.265 Pro+ / H.265 Pro / H.265 / H.264+ / H.264
- 8 MP @ 8 fps/ch
- 260 1U case



HOT 1080p

**DVR-216Q-K2**  
16-ch 2-HDD DVR

- 16-ch HD-TVI / AHD / CVI / CVBS video
- 1-ch, RCA (2.0 Vp-p, 1 KΩ)  
16-ch audio via coaxial cable
- Up to 24 channels of IP video input (up to 6 MP resolution)
- H.265 Pro+ / H.265 Pro / H.265 / H.264+ / H.264
- 4 MP Lite @ 15 fps/ch
- 380 1U case



1080p

**DVR-224Q-K2**  
24-ch 2-HDD DVR

- 24-ch HD-TVI / AHD / CVI / CVBS video
- 1-ch, RCA (2.0 Vp-p, 1 KΩ)
- Up to 26 channels of IP video input (up to 4 MP resolution)
- H.265 Pro+ / H.265 Pro / H.265 / H.264+ / H.264
- 4 MP Lite @ 15 fps/ch
- 380 1U case



5 MP HOT

**DVR-216U-K2**  
16-ch 2-HDD DVR

- 16-ch HD-TVI / AHD / CVI / CVBS video
- 1-ch, RCA (2.0 Vp-p, 1 KΩ)  
16-ch audio via coaxial cable
- Up to 32 channels of IP video input (up to 8 MP resolution)
- H.265 Pro+ / H.265 Pro / H.265 / H.264+ / H.264
- 8 MP @ 8 fps/ch
- 380 1U case



1080p HOT

**DVR-204Q-K1**  
4-ch 1-HDD DVR

- 4-ch HD-TVI / AHD / CVI / CVBS video
- 1-ch, RCA (2.0 Vp-p, 1 KΩ)  
4-ch audio via coaxial cable
- Up to 6 channels of IP video input (up to 6 MP resolution)
- H.265 Pro+ / H.265 Pro / H.265 / H.264+ / H.264
- 4 MP Lite @ 15 fps/ch
- 260 1U case



1080p

**DVR-232Q-K2**  
32-ch 2HDD DVR

- 32-ch HD-TVI / AHD / CVI / CVBS video
- 1-ch, RCA (2.0 Vp-p, 1 KΩ)
- Up to 34 channels of IP video input (up to 4 MP resolution)
- H.265 Pro+ / H.265 Pro / H.265 / H.264+ / H.264
- 4 MP Lite @ 15 fps/ch
- 380 1U case



HOT 1080p

**DVR-204G-F1**  
4-ch 1-HDD DVR

- 4-ch HD-TVI / AHD / CVI / CVBS video & 1-ch audio input
- 1-ch, RCA (2.0 Vp-p, 1 KΩ)  
4-ch audio via coaxial cable
- Up to 5 channels of IP video input (up to 1080p resolution)
- 1 SATA interface, HD 1080p Lite @ 25 fps/ch
- 260 1U case



1080p HOT

**DVR-208Q-K1**  
8-ch 1-HDD DVR

- 8-ch HD-TVI / AHD / CVI / CVBS video
- 1-ch, RCA (2.0 Vp-p, 1 KΩ)  
8-ch audio via coaxial cable
- Up to 12 channels of IP video input (up to 6 MP resolution)
- H.265 Pro+ / H.265 Pro / H.265 / H.264+ / H.264
- 4 MP Lite @ 15 fps/ch
- 260 1U case



1080p HOT

**DVR-216Q-K1**  
16-ch 1-HDD DVR

- 16-ch HD-TVI / AHD / CVI / CVBS video
- 1-ch, RCA (2.0 Vp-p, 1 KΩ)  
16-ch audio via coaxial cable
- Up to 24 channels of IP video input (up to 6 MP resolution)
- H.265 Pro+ / H.265 Pro / H.265 / H.264+ / H.264
- 4 MP Lite @ 15 fps/ch
- 260 1U case



HOT 1080p Lite

**DVR-208G-F1**  
8-ch 1-HDD DVR

- 8-ch HD-TVI / AHD / CVI / CVBS video & 1-ch audio input
- 1-ch, RCA (2.0 Vp-p, 1 KΩ)  
8-ch audio via coaxial cable
- Up to 10 channels of IP video input (up to 1080p resolution)
- 1 SATA interface, HD 1080p Lite @ 12 fps/ch
- 260 1U case



HOT 1080p Lite

**DVR-216G-K1**  
16-ch 1 HDD DVR

- 16-ch HD-TVI / AHD / CVI / CVBS video & 1-ch audio input
- 1-ch, RCA (2.0 Vp-p, 1 KΩ)  
16-ch audio via coaxial cable
- Up to 18 channels of IP video input (up to 5 MP resolution)
- 1 SATA interface, HD 1080p Lite @ 15 fps/ch
- 260 1U case

1080p Lite



**DVR-224G-K2**  
24-ch 2-HDD DVR

- 24-ch HD-TVI / AHD / CVI / CVBS video & 1-ch audio input
- 1-ch, RCA (2.0 Vp-p, 1 KΩ)
- Up to 18 channels of IP video input (up to 5 MP resolution)
- 2 SATA interface, HD 1080p Lite @ 15 fps/ch
- 380 1U case

1080p Lite



**DVR-232G-K2**  
32-ch 2-HDD DVR

- 32-ch HD-TVI / AHD / CVI / CVBS video & 1-ch audio input
- 1-ch, RCA (2.0 Vp-p, 1 KΩ)
- Up to 18 channels of IP video input (up to 5 MP resolution)
- 2 SATA interface, HD 1080p Lite @ 15 fps/ch
- 380 1U case

1080p Lite **HOT**



**DVR-104G-F1**  
4-ch 1-HDD DVR

- 4-ch HD-TVI / AHD / CVI / CVBS video & 1-ch audio input
- 1-ch, RCA (2.0 Vp-p, 1 KΩ)  
4-ch audio via coaxial cable
- Up to 5 channels of IP video input (up to 1080p resolution)
- 1 SATA interface, HD 1080p Lite @ 25 fps/ch
- Mini case

1080p Lite **HOT**



**DVR-108G-F1**  
8-ch 1-HDD DVR

- 8-ch HD-TVI / AHD / CVI / CVBS video & 1-ch audio input
- 1-ch, RCA (2.0 Vp-p, 1 KΩ)  
8-ch audio via coaxial cable
- Up to 10 channels of IP video input (up to 5 MP resolution)
- 1 SATA interface, HD 1080p Lite @ 25 fps/ch.
- Mini case

1080p Lite **HOT**



**DVR-116G-K1**  
16-ch 1-HDD DVR

- 16-ch HD-TVI / AHD / CVI / CVBS video & 1-ch audio input
- 1-ch, RCA (2.0 Vp-p, 1 KΩ)  
16-ch audio via coaxial cable"
- Up to 18 channels of IP video input (up to 5 MP resolution)
- 1 SATA interface, HD 1080p Lite @ 15 fps/ch.
- Mini case

# TRANSMISSION



With an incredible cost-to-performance ratio, HiLook cables and switches feature the most reliable performance for the price. The high-quality materials used in the network cables and coaxial cables make them extremely flame-resistant. The switches support a generous Power-over-Ethernet (PoE) distance – up to 250 meters – minimizing both network investment and maintenance efforts. Additionally, their 8-core technology guarantees stable power to the switches.



**NS-0105P-35(B)**  
Unmanaged PoE Switch

- L2, Unmanaged
- 4 \* 100 M PoE port
- 1 \* 100 M uplink port
- 802.3af and 802.3at
- 35 W PoE power budget
- Max. 250-meter long-distance transmission



**NS-0109P-60(B)**  
Unmanaged PoE Switch

- L2, Unmanaged
- 8 \* 100 M PoE port
- 1 \* 100 M uplink port
- 802.3af and 802.3at
- 60 W PoE power budget
- Max. 250-meter long-distance transmission



**NS-0106P-35**  
Unmanaged PoE Switch

- L2, Unmanaged
- 4 \* 10/100 M PoE port
- 2 \* 10/100 M uplink port
- 802.3af and 802.3at
- 35 W PoE power budget
- Max. 250-meter long-distance transmission



**NS-0310P-60**  
Unmanaged PoE Switch

- L2, Unmanaged
- 8 \* 10/100 M PoE port
- 2 \* Gigabit uplink port
- 802.3af and 802.3at
- 60 W PoE power budget
- Max. 250-meter long-distance transmission



**NS-0318P-130(B)**  
Unmanaged PoE Switch

- L2, Unmanaged
- 16 \* 100 M PoE port
- 1 \* 1000 M RJ45
- 1 \* 1000 M SFP
- 802.3af and 802.3at
- 130 W PoE power budget
- "Extend" Mode: Port 9-16, max. 250-meter long-distance transmission



**NS-0326P-230(B)**  
Unmanaged PoE Switch

- L2, Unmanaged
- 24 \* 100 M PoE port
- 1 \* 1000 M RJ45
- 1 \* 1000 M SFP
- 802.3af and 802.3at
- 230 W PoE power budget
- "Extend" Mode: Port 17-24, max. 250-meter long-distance transmission



**NC-6AU-W**  
CCA Cat 6 Network Cable

- 0.585-mm diameter, 305-meter length
- Cat.6 UTP PVC
- CCA

Brackets of Network Cameras

B1 Series Fixed-lens Bullet



**HIA-J101**  
Junction box

D1 Series Fixed-lens Dome



**HIA-J204**  
Inclined ceiling mount



**HIA-B401-110**  
Wall mount



**HIA-B401-110B**  
Wall mount



**HIA-B101-110**  
Pendant mount



**HIA-B201**  
Corner mount



**HIA-P101**  
Rain shade



**HIA-P103**  
Rain shade



**HIA-J104-DM18**  
Junction box



**HIA-B403**  
Wall mount

T2 Series Fixed-lens Turret



**HIA-B301**  
Vertical pole mount



**HIA-B201**  
Corner mount



**HIA-B401-110T**  
Wall mount

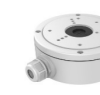


**HIA-J102**  
Junction box

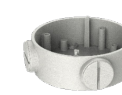
B6 Series Varifocal Bullet



**HIA-B301**  
Vertical pole mount



**HIA-J102**  
Junction box



**HIA-J105**  
Junction box

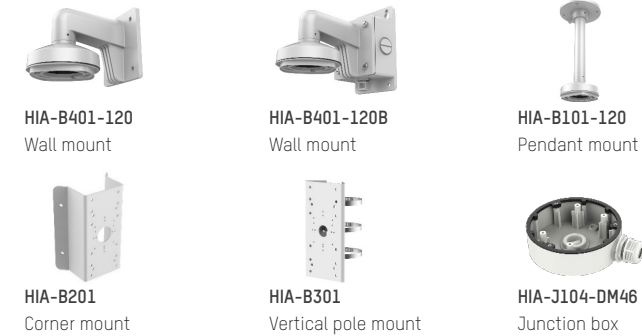


**HIA-B201**  
Corner mount

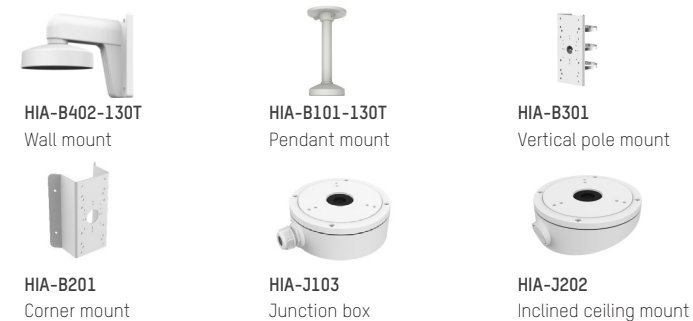
D6 Series Varifocal Dome



D7 Series Varifocal Dome



T6 series Varifoca Turret

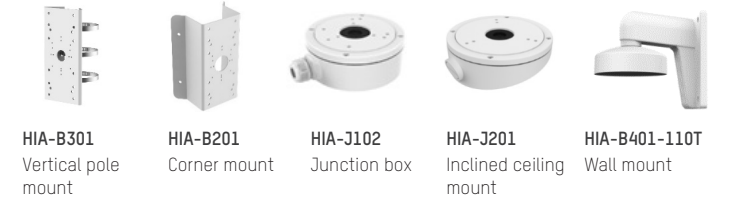


Brackets of Turbo HD Cameras

T1 (P) (M) Series Mini Turret



T2 (P) Series Turret



T2 (M) Series Turret



T3 Series Varifocal Turret



B1/B2 Series Mini Bullet



**HIA-J101**  
Junction box

B3 Series Varifocal Bullet



**HIA-B301**  
Vertical pole mount



**HIA-B201**  
Corner mount



**HIA-J102**  
Junction box

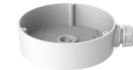
B3 Series Varifocal Bullet



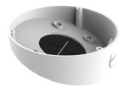
**HIA-B301**  
Vertical pole mount



**HIA-B201**  
Corner mount



**HIA-J104-DM45**  
Junction box



**HIA-J203-DM45**  
Inclined ceiling mount



**HIA-B402-DM45**  
Wall mount



**HIA-B101-DM45**  
Pendant mount



**HIA-P102**  
Rain shade

Brackets of PTZ Cameras

2-inch PTZ



**HIA-B404-PT**  
Wall mount

PanoVu Mini



**HIA-B404-T**  
Wall mount



**HIA-B101-PT10**  
Pendant mount

4-inch PTZ



**HIA-B171**  
Pendant mount



**HIA-B172**  
Pendant mount



**HIA-B173**  
Ceiling mount



**HIA-B473**  
Parapet wall mount



**HIA-B471**  
Wall mount with junction box



**HIA-B471-P**  
Vertical pole mount



**HIA-B471-C**  
Corner mount



**HIA-B471-B**  
Wall mount with junction box



**HIA-B471-BP**  
Vertical pole mount with junction box



**HIA-B471-BC**  
Wall mount with junction box



**HIA-B371**  
Gooseneck mount



**HIA-B472**  
Wall mount (short arm)



#### Headquarters

No.555 Qianmo Road, Binjiang District,  
Hangzhou 310051, China  
T +86-571-8807-5998  
Business: [overseasbusiness@hikvision.com](mailto:overseasbusiness@hikvision.com)  
Technical Support: [support@hikvision.com](mailto:support@hikvision.com)

Hikvision Australia  
T +61-2-8599-4233  
[salesau@hikvision.com](mailto:salesau@hikvision.com)

Hikvision Azerbaijan  
T +994 50 369 81 57

Hikvision Brazil  
T +55-11-3318-0050  
[Latam.support@hikvision.com](mailto:Latam.support@hikvision.com)

Hikvision Canada  
T +1-866-200-6690  
[sales.canada@hikvision.com](mailto:sales.canada@hikvision.com)

Hikvision Colombia  
[sales.colombia@hikvision.com](mailto:sales.colombia@hikvision.com)

Hikvision Czech  
T +420 29 6182640  
[info.cz@hikvision.com](mailto:info.cz@hikvision.com)

Hikvision Europe  
T +31-23-5542770  
[isales.eu@hikvision.com](mailto:isales.eu@hikvision.com)

Hikvision France  
T +33 1-85-330-450  
[info.fr@hikvision.com](mailto:info.fr@hikvision.com)

Hikvision Germany  
T +49-69-401507290  
[sales.adch@hikvision.com](mailto:sales.adch@hikvision.com)

Hikvision India  
T +91-22-28469900  
[sales@pramahikvision.com](mailto:sales@pramahikvision.com)

Hikvision Indonesia  
T +62-21-2933759  
[sales.Indonesia@hikvision.com](mailto:sales.Indonesia@hikvision.com)

Hikvision Israel  
T +972-79-5555590  
[sales.israel@hikvision.com](mailto:sales.israel@hikvision.com)

Hikvision Italy  
T +39-0438-6902  
[info.it@hikvision.com](mailto:info.it@hikvision.com)

Hikvision Kazakhstan  
T +7-727-9730667  
[nikia.panfilov@hikvision.ru](mailto:nikia.panfilov@hikvision.ru)

Hikvision Korea  
T +82-(0)31-731-8817  
[sales.korea@hikvision.com](mailto:sales.korea@hikvision.com)

Hikvision Malaysia  
T +601-7652-2413  
[sales.my@hikvision.com](mailto:sales.my@hikvision.com)

Hikvision Mexico  
T +52 55 2624 0110  
[sales.mexico@hikvision.com](mailto:sales.mexico@hikvision.com)

Hikvision Pakistan  
T +92-2135147526  
[support.pk@hikvision.com](mailto:support.pk@hikvision.com)

Hikvision Philippines  
[sales.ph@hikvision.com](mailto:sales.ph@hikvision.com)

Hikvision Poland  
T +48-22-460-01-50  
[info.pl@hikvision.com](mailto:info.pl@hikvision.com)

Hikvision Romania  
[marketing.ro@hikvision.com](mailto:marketing.ro@hikvision.com)

Hikvision Russia  
T +7-495-669-67-99  
[saleru@hikvision.com](mailto:saleru@hikvision.com)

Hikvision Singapore  
T +65-6684-4718  
[sg@hikvision.com](mailto:sg@hikvision.com)

Hikvision South Africa  
T +27877018113  
[sale.africa@hikvision.com](mailto:sale.africa@hikvision.com)

Hikvision Spain  
T +34-91-737-16-55  
[info.es@hikvision.com](mailto:info.es@hikvision.com)

Hikvision Tashkent  
T +99-87-1238-9438  
[uzb@hikvision.ru](mailto:uzb@hikvision.ru)

Hikvision Thailand  
T +662-275-9949  
[sales.thailand@hikvision.com](mailto:sales.thailand@hikvision.com)

Hikvision Turkey  
T +90 216 521 70 (70/71/72/73/74)  
[sales.tr@hikvision.com](mailto:sales.tr@hikvision.com)

Hikvision UAE  
T +971-4-4432090  
[salesme@hikvision.com](mailto:salesme@hikvision.com)

Hikvision UK & Ireland  
T +01628-902140  
[sales.uk@hikvision.com](mailto:sales.uk@hikvision.com)

Hikvision USA  
T +1-909-895-0400  
[sales.usa@hikvision.com](mailto:sales.usa@hikvision.com)

Hikvision Vietnam  
T +84-974270888  
[sales.vt@hikvision.com](mailto:sales.vt@hikvision.com)



## PRODUCT CATALOG

IP Solution

Turbo HD Solution

Transmission

2021 H1